

November 21, 2008

Submitted Electronically
Document Management System
www.regulations.gov

U.S. Department of Transportation
Docket Operations
West Building Ground Floor, Room W12-140
1200 New Jersey Avenue, SE
Washington, D.C. 20590-0001
www.regulations.gov

RE: Petition for Exemption from Title 14 CFR part 121, appendices I & J

Dear Docket:

Pursuant to Title 14 CFR § 11.15, the Aeronautical Repair Station Association (ARSA), on behalf of its members hereby petitions for an exemption from Title 14 CFR part 121, appendices I and J, Anti-Drug and Alcohol Misuse Prevention Program.¹ Specifically, it petitions for an exemption from the requirements of part 121, appendix I, § III and appendix J, § II(A). These provisions require any employee performing a safety-sensitive function for an employer, directly or by contract (including subcontract at any tier) be covered under a Department of Transportation/Federal Aviation Administration (DOT/FAA) drug and alcohol (D&A) testing program.

Extent of Relief Sought

The Association seeks an exemption from the cited DOT/FAA D&A requirements for the following person(s):

1. Covered employers using LONG-LOK Fasteners Corporation (LONG-LOK) to complete Airworthiness Directive (AD) 93-05-16;²
2. Companies called out to perform required work in an AD that do not have an existing FAA/DOT D&A program; and,
3. All entities performing alterations for a covered employer.

¹ Unless otherwise noted all regulatory cites are to Title 14 CFR.

² See 14 CFR part 121, app. I, §§ II, IX(C) and app. J, §§ I(D), VII(C) (defining covered employer as a part 119 certificate holder with authority to operate under parts 121 and 135, an operator as defined in § 91.147 and individuals or companies that provide safety-sensitive services by contract, at any tier, to such part 119 certificate holders or § 91.147 operators).

RE: Petition for Exemption from Title 14 CFR part 121, appendices I & J

Reason for Relief Sought

Since the FAA extended the D&A requirements to include subcontractors at any tier of a contract, our member repair stations are increasingly faced with the dilemma of how to comply with an AD when it requires articles be returned to a specific manufacturer for alterations. These manufacturers often do not have a DOT/FAA D&A program as they are only permitted to rebuild or alter their own articles (see § 43.3(j)). In this regard, the FAA has failed to provide an explicit ruling on whether performing alterations is a safety-sensitive function under the current rules. As a result, repair stations performing work for covered employers must follow an AD that forces them into a possible regulatory violation for contracting work to a facility whose workers are not covered by a DOT-sanctioned program.

1. AD 93-05-16

A member repair station is currently tasked with performing AD 93-05-16 for a covered employer. The AD requires modification of the rudder power control valve on certain DC-9 and MD-88 model aircraft. The service bulletin (SB 27-321 and SB 27-321, revision 1 as an alternative means of compliance) specified in the AD requires returning the slide assembly to the manufacturer, LONG-LOK for installation of a self-locking element.

At the time of the AD's issuance, LONG-LOK (a non-certificated subcontractor) was not obligated to have a DOT/FAA D&A program. At present, LONG-LOK still does not have its own approved program despite the fact that it is the only facility able to accomplish the modification specified in AD 93-05-16. It is unreasonable to require every maintenance facility asked to perform this AD to bring LONG-LOK's designated employees under its own DOT/FAA D&A program for a single contract. Further, it is just as burdensome on LONG-LOK to have its employees included in numerous facilities' programs in order to accomplish this single AD. As a result the repair station is forced to request an exemption from the D&A rules in order to properly accomplish this AD without violating the regulations by contracting work to a non-covered facility.

2. AD Compliance

Undoubtedly, the situation with AD 93-05-16 is not unique. There are numerous ADs that predate the expanded D&A rule that will continue to cause conflict between complying with part 39 versus part 121, appendices I & J. In these situations when an operator contracts with a repair station to accomplish an AD and that AD *requires* a non-covered manufacturer to accomplish the work, § 39.11 requires the repair station to subcontract to the listed entity, unless an alternative means of compliance is approved.

When the manufacturer balks at implementing its own FAA/DOT program the repair station and ultimately the air carriers are stuck with the choices of not accomplishing the

RE: Petition for Exemption from Title 14 CFR part 121, appendices I & J

AD or violating the AD or violating part 121, appendices I & J. In these situations the FAA should grant an exemption from the D&A requirements for both the manufacturer and any covered employer so the unsafe condition may be properly addressed without fear of regulatory violations for contracting to a non-covered source.

3. Alterations

The number of manufacturers without an FAA/DOT D&A program is due in large part, to their confusion over whether an alteration/modification is considered "aircraft maintenance and preventive maintenance" and therefore covered by the D&A rules.

Part 121, appendices I & J require that employees performing safety-sensitive functions for air carriers in the U.S. be subject to testing. Maintenance as defined in § 1.1 includes inspection, repair, overhaul, preservation and replacement of parts, while an alteration is a change or modification to an article (see Order 8900.1, vol. 4, ch. 9, § 1, para. 4-1178(A)(2)).

If alterations are considered maintenance for purposes of the D&A rules, then personnel performing them must be included in a DOT/FAA program. On the other hand, if alterations are not covered by the D&A rules, no federal testing would be authorized and a covered employer would be subject to sanctions if it errs on the side of caution and tests its subcontractors that only perform alterations (see 14 CFR part 121, app. I, § V(B)(6)(a)(2)).

Further, the confusion is not isolated to manufacturers and ADs. There are numerous repair stations and other non-certificated entities that perform alterations exclusively for U.S. carrier's or operators. These facilities are faced with the same dilemma concerning whether to include their employees or subcontractors in a sanctioned program.

Because a repair station working for air carriers must comply exactly with part 121 appendices I & J and the FAA has not provided guidance dictating whether an alteration is considered maintenance, an exemption from these requirements is warranted for any entity strictly performing alterations, whether the company is called out in an AD or is performing alterations independently for air carriers at any tier in a contract.

Exemption in Public Interest

An AD is a legally enforceable rule that dictates how to correct an unsafe condition that exists in a product and that is likely to exist in other products of the same design (see §§ 39.3, 39.5). The AD specifies inspections that must be carried out, conditions and limitations that must be complied with, and any actions that must be taken to resolve the unsafe condition (§ 39.11). An owner cannot legally operate its aircraft (and is in violation of the regulations) unless it has complied with all portions of the AD (§ 39.9).

RE: Petition for Exemption from Title 14 CFR part 121, appendices I & J

Therefore, it is in the public interest to ensure that all unsafe conditions that give rise to an AD are corrected as required. The public interest in properly correcting unsafe conditions by those technically qualified to do so outweighs the interest that the specific facility called out in the AD does not have DOT/FAA sanctioned testing program.

No Adverse Effect on Safety

Providing an exemption from the DOT/FAA D&A testing rules for covered employers using LONG-LOK to perform AD 93-05-16, any company called out in an AD without an existing program and all persons performing alterations would not adversely affect safety. The actual maintenance activities, including inspection and approval of the work for return to service are performed by certificated persons that are subject to the applicable testing requirements. Further, the FAA has already determined that in the interest of safety the manufacturer is the only entity with the requisite technical expertise to perform the work. Therefore, providing exemptions to these manufacturers reinforces the agency's own safety determination.

Federal Register Summary

On behalf of its members, ARSA seeks an exemption from Title 14 CFR part 121, appendices I & J. Specifically, the Association seeks an exemption for any person(s) using LONG-LOK Fasteners Corporation to accomplish Airworthiness Directive (AD) 93-05-16, any entities called out to perform required work in an AD without an existing FAA/DOT D&A program and any person(s) performing alterations for a covered employer.

Kind Regards,

A handwritten signature in blue ink, appearing to read "Colin P. Carroll".

Colin P. Carroll
Regulatory Counsel

Enclosures: Exhibit 1 – Airworthiness Directive 93-05-16
 Exhibit 2 – Service Bulletin 27-371, revision 1

EXHIBIT 1:

Airworthiness Directive 93-05-16

RGL Home

Airworthiness Directive

➤ Federal Register Information

▼ Header Information

DEPARTMENT OF TRANSPORTATION

Federal Aviation Administration

14 CFR Part 39

Docket No. 93-NM-48-AD; Amendment 39-8698; AD 93-05-16 R1

Airworthiness Directives; MCDONNELL DOUGLAS DC-9 and C-9 (Military)
Airplanes, DC-9-80 Series Airplanes and MD-88 Airplanes

PDF Copy (If Available):

▼ Preamble Information

AGENCY: Federal Aviation Administration, DOT

DATES: Effective November 18, 1993.

▼ Regulatory Information

93-05-16 R1 MCDONNELL DOUGLAS: Amendment 39-8698. Docket 93-NM-48-AD. Revises AD 93-05-16, Amendment 39-8520 which superseded AD 91-18-03, Amendment 39-8006.

Applicability: Model DC-9 and C-9 (Military) airplanes as listed in McDonnell Douglas DC-9 Alert Service Bulletin A27-327, Revision 2, dated July 14, 1992; and Model DC-9-80 series airplanes and Model MD-88 airplanes as listed in McDonnell Douglas MD-80 Alert Service Bulletin A27-317, Revision 2, dated May 22, 1992; on

which the rudder power control valve has not been modified in accordance with McDonnell Douglas Service Bulletin **27-321**, dated May 18, 1992, or a production equivalent; certificated in any category.

Compliance: Required as indicated, unless accomplished previously.

NOTE: This AD requires the same actions as required by AD 93-05-16, amendment 39-8520, but is applicable to additional airplanes. Operators affected by this AD who have accomplished these actions previously in accordance with AD 93-05-16 are considered to be in compliance with this revised AD.

To prevent loss of rudder control, accomplish the following:

(a) For airplanes listed in McDonnell Douglas DC-9 Alert Service Bulletin A27-327, Revision 1, dated March 9, 1992, and in McDonnell Douglas MD-80 Alert Service Bulletin A27-317, Revision 2, dated May 22, 1992; on which the retention nut on the slide assembly of the rudder power control valve has not been inspected in accordance with McDonnell Douglas DC-9 Alert Service Bulletin A27-327, dated December 2, 1991, or Revision 1, dated March 9, 1992, or Revision 2, dated July 14, 1992; or McDonnell Douglas MD-80 Alert Service Bulletin A27-317, dated June 17, 1991, or Revision 1, dated January 14, 1992, or Revision 2, dated May 22, 1992: Within 90 days after April 23, 1993 (the effective date of AD 93-05-16, amendment 39-8520), inspect the retention nut on the rudder power control valve slide assembly to determine if a lockwire is installed, in accordance with McDonnell Douglas DC-9 Alert Service Bulletin A27-327, Revision 1, dated March 9, 1992; or McDonnell Douglas MD-80 Alert Service Bulletin A27-317, Revision 2, dated May 22, 1992; as applicable.

(1) If a lockwire is installed, no further action is required by this AD.

(2) If a lockwire is not installed, prior to further flight, adjust the retention nut, install a lockwire, and functionally check the rudder power control valve in accordance with the applicable service bulletin. No further action is required by this AD.

(b) For airplanes listed in McDonnell Douglas DC-9 Alert Service Bulletin A27-327, Revision 2, dated July 14, 1992, and not affected by paragraph (a) of this AD: Within 90 days after the effective date of this AD, inspect the retention nut on the rudder power control valve slide assembly to determine if a lockwire is installed, in accordance with McDonnell Douglas DC-9 Alert Service Bulletin A27-327, Revision 1, dated March 9, 1992, or Revision 2, dated July 14, 1992.

(1) If a lockwire is installed, no further action is required by this AD.

(2) If a lockwire is not installed, prior to further flight, adjust the retention nut, install a lockwire, and functionally check the rudder power control valve in accordance with the applicable service bulletin. No further action is required by this AD.

(c) Modification of the rudder power control valve by replacing the lockwire with a locking tab washer, in accordance with McDonnell Douglas Service Bulletin **27-321**, dated May 18, 1992, or a production equivalent, constitutes terminating action for

the requirements of this AD.

(d) An alternative method of compliance or adjustment of the compliance time that provides an acceptable level of safety may be used if approved by the Manager, Los Angeles Aircraft Certification Office (ACO), FAA, Transport Airplane Directorate. Operators shall submit their requests through an appropriate FAA Principal Maintenance Inspector, who may add comments and then send it to the Manager, Los Angeles ACO.

NOTE: Information concerning the existence of approved alternative methods of compliance with this AD, if any, may be obtained from the Los Angeles ACO.

(e) Special flight permits may be issued in accordance with FAR 21.197 and 21.199 to operate the airplane to a location where the requirements of this AD can be accomplished.

(f) The inspection, adjustment, installation, and functional check shall be done in accordance with McDonnell Douglas DC-9 Alert Service Bulletin A27-327, Revision 1, dated March 9, 1992; McDonnell Douglas DC-9 Alert Service Bulletin A27-327, Revision 2, dated July 14, 1992; or McDonnell Douglas MD-80 Alert Service Bulletin A27-317, Revision 2, dated May 22, 1992; as applicable. The modification shall be done in accordance with McDonnell Douglas Service Bulletin **27-321**, dated May 18, 1992. The incorporation by reference of McDonnell Douglas DC-9 Alert Service Bulletin A27-327, Revision 2, dated July 14, 1992, was approved by the Director of the Federal Register in accordance with 5 U.S.C. 552(a) and 1 CFR Part 51. The incorporation by reference of McDonnell Douglas DC-9 Alert Service Bulletin A27-327, Revision 1, dated March 9, 1992; McDonnell Douglas MD-80 Alert Service Bulletin A27-317, Revision 2, dated May 22, 1992; and McDonnell Douglas Service Bulletin **27-321**, dated May 18, 1992; was approved previously by the Director of the Federal Register as of April 23, 1993 (58 FR 15760, March 24, 1993). Copies may be obtained from McDonnell Douglas Corporation, P.O. Box 1771, Long Beach, California 90846-1771, Attention: Business Unit Manager, Technical Publications - Technical Administrative Support, C1-L5B. Copies may be inspected at the FAA, Transport Airplane Directorate, 1601 Lind Avenue, SW., Renton, Washington; or at the FAA, Los Angeles Aircraft Certification Office, 3229 East Spring Street, Long Beach, California; or at the Office of the Federal Register, 800 North Capitol Street, NW., suite 700, Washington, DC.

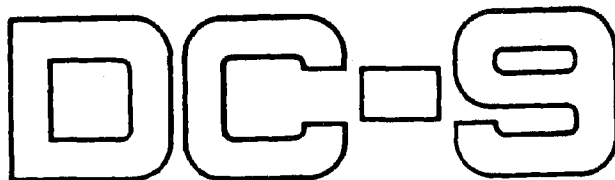
(g) This amendment becomes effective on November 18, 1993.

▼ Footer Information

▼ Comments

EXHIBIT 2:

Service Bulletin 27-371, revision 1



P.O. Box 1771
Long Beach, CA
90801

REFERENCE:
BULLETIN 27-321

SERVICE BULLETIN CHANGE NOTIFICATION

NUMBER: 27-321 CN1

SUBJECT: FLIGHT CONTROLS - Rudder and Tab - Modify Rudder Power Control Valve and Manifold Assembly.

AIRCRAFT: DC-9, Series 10, 20, 30, 40, 50, C-9, DC-9-81, -82, -83, and -87 (MD-81, -82, -83, and -87); MD-88

This Change Notification is published to inform affected operators that subject Service Bulletin is to be changed as indicated below.

Page 35: Change paragraph 3.A.(1) to read as follows:

Is

<u>New Part No.</u>	<u>Qty</u> <u>Per Option</u>		<u>Key Word</u>	<u>Old Part No.</u>	<u>Instructions- Disposition</u>
	<u>I</u>	<u>II</u>			
N-9167088		1	Nut	4917088-1	2/

Was

<u>New Part No.</u>	<u>Qty</u> <u>Per Option</u>		<u>Key Word</u>	<u>Old Part No.</u>	<u>Instructions- Disposition</u>
	<u>I</u>	<u>II</u>			
N-9167088	1	1	Nut	4917088-1	2/

This change will be incorporated in the next formal Service Bulletin revision; however, no formal revision is planned at the present time.

JW
PDG-3

DOUGLAS AIRCRAFT COMPANY
MCDONNELL DOUGLAS CORPORATION
PRODUCT SUPPORT

McDonnell Douglas Corporation (MDC) proprietary rights are included in the information disclosed herein, and recipient by accepting this document agrees that the information is proprietary to MDC. MDC authorizes recipient to reproduce such information in other documents created for internal use if these documents are protected similarly by a proprietary legend.

March 11/94

Reference Bulletin 27-321

Page 1 of 1

DC-9

BULLETIN 27-321

SERVICE BULLETIN
REVISION TRANSMITTAL SHEET

FLIGHT CONTROLS - Rudder and Tab - Modify Rudder Power Control Valve and Manifold Assembly.

This page transmits Revision 1 for DC-9 Service Bulletin 27-321 to incorporate the following changes:

NOTE: This revision constitutes a complete reissue and reflects current operators of affected aircraft at time of issue.

Reason for Revision: To add a self-locking nut in addition to lockwire as an optional method of achieving dual (redundant) locking.

To add eleven aircraft to Service Bulletin Effectivity which did not have modification accomplished in production

No additional work is required by this revision for aircraft previously modified by prior issue of this Service Bulletin.

Pages 1 thru 3, 7 and 10:
Revised title.
Added second NOTE under title.
Changed page number to 1 of 36, was 1 of 31.

Added eleven aircraft to Service Bulletin Effectivity as follows:

<u>OPR</u>	<u>FUS</u>	<u>(FSN)</u>	<u>OPR</u>	<u>FUS</u>	<u>(FSN)</u>	<u>OPR</u>	<u>FUS</u>	<u>(FSN)</u>	<u>OPR</u>	<u>FUS</u>	<u>(FSN)</u>
AA	2000	(53286)	AS	2004	(53079)	AZ	2007	(53203)	SK	2003	(53368)
AA	2006	(53287)	AZ	2002	(53180)	AZ	2009	(53204)	ZBN	1959	(49852)
AO	2001	(53305)	AZ	2005	(53181)	CBF	2010	(53162)			

Page 19: Revised production effectivity statement.

Revised Key Word under spares affected.

Revised Reason.

McDonnell Douglas Corporation (MDC) proprietary rights are included in the information disclosed herein, and recipient by accepting this document agrees that the information is proprietary to MDC. MDC authorizes recipient to reproduce such information in other documents created for internal use if these documents are protected similarly by a proprietary legend.

DOUGLAS AIRCRAFT COMPANY

- Pages 20 and 21: Added Option I heading to original Description.
Revised original Description.
Added Description for Option II.
Revised Approval statement.
Added Option I heading to original man-hours.
Added man-hours for Option II.
Revised paragraph 1.G.(1).
- Page 22: Added paragraphs 1.J.(1) and 1.J.(2). Reidentified subsequent paragraphs accordingly.
Added NOTE to References.
Revised drawing change letter for SR9270026 to "C", was blank.
Revised paragraph 1.J.(3).
- Pages 23 and 24: Identified original Accomplishment Instructions as Option I.
Revised Accomplishment Instructions for Option I.
Added new paragraph 2.E. Reidentified subsequent paragraphs accordingly.
Added Accomplishment Instructions for Option II.
- Pages 25 thru 28: Added Option I heading to Figure 1.
Deleted callouts for adding self-locking element.
Revised steps 1, 2, 4, 5, 6, 7, and 8.
Added NOTE under Option I heading.
Deleted step 10.
Revised title for Figure 1.
- Pages 29 thru 34: Added Figure 2 for Option II.

DOUGLAS AIRCRAFT COMPANY

Pages 35
and 36:

Added NOTE.

Revised paragraphs 3.A.(1) and 3.A.(2).

Revised footnote 1/.

Deleted original footnote 2/.

Reidentified original footnote 3/ as footnote 2/.

Added new footnote 3/.

Deleted original paragraph 3.A.(3).

Added new paragraph 3.A.(3).

Revised paragraph 3.B.

NOTE: Service Bulletin 27-321 Summary has been revised to incorporate the intent of this revision.

JW
PDG-1

May 18/92

Bulletin 27-321

Revision 1 January 31/94

Page 3

McDonnell Douglas Corporation Proprietary Information. Use or disclosure of
THESE DATA SUBJECT TO RESTRICTIVE LEGEND ON TITLE PAGE OR FIRST PAGE.

DC-9

P.O. Box 1771
Long Beach, CA
90801

REFERENCE:
BULLETIN 27-321

SERVICE BULLETIN SUMMARY

NOTE: This summary is for information only and reflects the intent of the attached FAA approved Service Bulletin.

SUBJECT: FLIGHT CONTROLS - Rudder and Tab - Modify Rudder Power Control Valve and Manifold Assembly.

NOTE

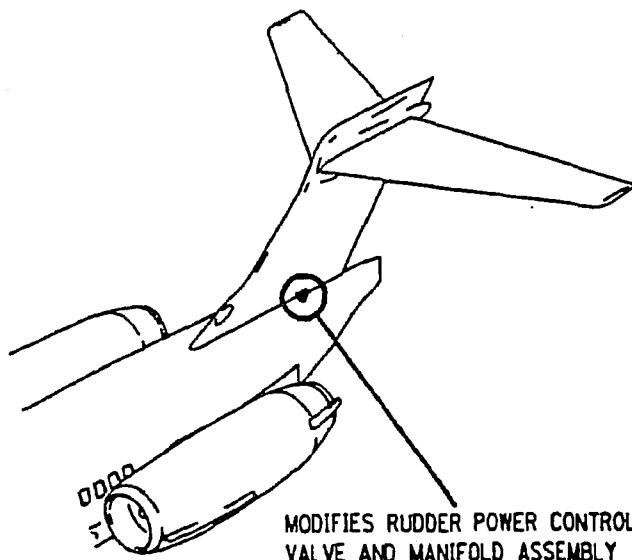
Service Bulletin 27-321 is affected by Federal Aviation Administration Airworthiness Directive No. 93-05-16 R1; Amendment 39-8698, effective November 18, 1993.

ANALYSIS: Provides information and material requirements to incorporate engineering which modifies the rudder power control valve and manifold assembly to add dual locking capability to the slide adjustment retention nut. Retention nut lockwire has been found to have been inadvertently left out during assembly of the valve, a condition addressed by inspections per previous Service Bulletins. Loss or backing off of the retention nut could result in loss of rudder control.

DESCRIPTION: Modifies the rudder power control valve and manifold assembly located in the aft fuselage at the lower end of the rudder hinge line as follows: Option I - (1) Replaces retention nut lockwire with a locking tab washer. (2) Machines a keyway in slide assembly to accept tab washer. (3) Bonds a self-locking element on the slide assembly per vendor special process and military specification MIL-F-18240E. (4) Modifies and reidentifies valve end cap, slide retainer, and slide nut. Option II -

(1) Replaces slide assembly retention nut with a self-locking nut. (2) Modifies and reidentifies valve end cap, slide retainer, and slide nut. This is an improvement change which will minimize the possibility of a retention nut not being locked or backing off.

EFFECTIVITY: DC-9, Series 10, 20, 30, 40, 50, C-9, DC-9-81, -82, -83, and -87 (MD-81, -82, -83, and -87); MD-88 aircraft. (See Service Bulletin 27-321 for detailed Effectivity.)



McDonnell Douglas Corporation (MDC) proprietary rights are included in the information disclosed herein, and recipient by accepting this document agrees that the information is proprietary to MDC. MDC authorizes recipient to reproduce such information in other documents created for internal use if these documents are protected similarly by a proprietary legend.

DOUGLAS AIRCRAFT COMPANY

COMPLIANCE: Douglas Aircraft Company recommends accomplishment at the earliest practical maintenance period.

MANPOWER:

	Option	
	<u>I</u>	<u>II</u>
Total Man-Hours	6.8	5.8
Total Elapsed Hours	6.8	5.8

MATERIAL INFORMATION: Parts/material are to be procured from operator's stock or supplier.

DC-9

P.O. Box 1771
Long Beach, CA
90801

BULLETIN 27-321

SERVICE BULLETIN

FLIGHT CONTROLS - Rudder and Tab - Modify Rudder Power Control Valve and Manifold Assembly.

NOTE

This Service Bulletin is issued as a partial record-type change. Engineering drawings are furnished to support portions of this modification.

This Service Bulletin is affected by Federal Aviation Administration Airworthiness Directive No. 93-05-16 R1; Amendment 39-8698, effective November 18, 1993.

1. Planning Information:

A. Effectivity:

(1) Aircraft Affected:

DC-9, Series 10, 20, 30, 40, 50, C-9,
DC-9-81, -82, -83, and -87 (MD-81, -82, -83, and -87); MD-88

(a) Operator and Aircraft Number:

<u>Operator</u>	<u>Factory Serial No.</u>	<u>Operator</u>	<u>Factory Serial No.</u>
AA	49145	AA	49558 thru 49566
	49155	(cont)	49592 thru 49601
	49158 and 49159		49647 thru 49656
	49161 thru 49163		49675 thru 49684
	49167 and 49168		49730 thru 49739
	49171 thru 49181		49797 thru 49806
	49251		49890 thru 49899
	49253 thru 49259		49915 thru 49924
	49269 thru 49273		49987 thru 49996
	49286 thru 49329		53025 thru 53034
	49331 thru 49353		53083 thru 53092
	49451 thru 49460		53151 thru 53160
	49468 thru 49477		53247 thru 53256
	49553		53284 and 53287

McDonnell Douglas Corporation (MDC) proprietary rights are included in the information disclosed herein, and recipient by accepting this document agrees that the information is proprietary to MDC. MDC authorizes recipient to reproduce such information in other documents created for internal use if these documents are protected similarly by a proprietary legend.

May 18/92

Bulletin 27-321

Revision 1 January 31/94

Page 1 of 36

DOUGLAS AIRCRAFT COMPANY SERVICE BULLETIN

<u>Operator</u>	<u>Factory Serial No.</u>	<u>Operator</u>	<u>Factory Serial No.</u>
AC	45845	AO	47076
	47019		47080
	47021 and 47022		47090 and 47091
	47024		47452
	47069 thru 47071		47455
	47195		47461
	47198 and 47199		47504
	47265 and 47266		47542
	47289 and 47290		47556
	47292 thru 47294		47637
	47340 thru 47342		47640
	47348 thru 47350		47642 thru 47644
	47353 and 47354		47675
	47422		47678
	47485		47704
	47546		47707
	47554		48104 thru 48106
	47557		53193 thru 53197
	47560		53303 and 53305
	47592	AS	48079 and 48080
	47598		49103 and 49104
	47611		49111
AM	47006		49126
	47106		49231 thru 49236
	47394		49363 thru 49365
	47501		49386 and 49387
	47549		49643
	47594		49657 and 49658
	47602		49825
	47607		49925
	47609		53016
	47650		53018 thru 53024
	48067 thru 48069		53052
	48083		53063
	48125 thru 48130		53074 thru 53079
	48150 and 48151	AU	48024 and 48025
	49149		49784
	49188 thru 49190		49934
	49660		53117
	49667	AV	49939
	49673		49942
	49726		49944 thru 49948
	49761		53120
	49763 thru 49765		53122 and 53123
	49826		53125
	49889		
	49926 thru 49929		
	53017		
	53050 and 53051		
	53174 and 53175		

DOUGLAS AIRCRAFT COMPANY SERVICE BULLETIN

<u>Operator</u>	<u>Factory Serial No.</u>		<u>Operator</u>	<u>Factory Serial No.</u>	
AY	47604	thru 47606	BW	49390	
	47613	and 47614		49400	
	47694	thru 47696		49448	
	47771	thru 47773		49568	
	48134	thru 48136		49575	
	49150	thru 49152		49632	
	49252			49786	
	49284			49789	
	49403	thru 49405		49824	
	49625		CBF	49415	
	49741			49425	
	49904	thru 49906		49428	
	53244			49502	
	53246			49505	and 49506
AZ	47038	and 47039		49508	
	47046	and 47047		49510	
	47101			49512	
	47128	and 47129		49514	
	47222	thru 47226		49516	
	47228	thru 47238		49518	
	47283			49520	
	47311			49522	thru 49524
	47432	thru 47437		49849	thru 49851
	47502			53162	
	47518	and 47519	CEA	49140	and 49141
	47533			49355	
	47544			49501	
	47553			49503	and 49504
	47575			49507	
	47591			49509	
	47653			49511	
	49192	thru 49221		49513	
	49430	thru 49435		49515	
	49549	thru 49552		49517	
	49794	thru 49796		49519	
	49969	thru 49975		49521	
	53053	thru 53062	CO	45788	and 45789
	53176	thru 53181		45791	thru 45793
	53203	and 53204		45847	
BD	45712	and 45713		47067	
	45719			47094	
	45738	and 45739		47110	thru 47113
	47430			47218	and 47219
	47468			47281	
	47484			47423	and 47424
	47523			47487	
	47555			47490	
	47559			47520	and 47521
	47648			47524	
	47666				

May 18/92

Bulletin 27-321

Revision 1 January 31/94

Page 3

DOUGLAS AIRCRAFT COMPANY SERVICE BULLETIN

<u>Operator</u>	<u>Factory Serial No.</u>	<u>Operator</u>	<u>Factory Serial No.</u>
CO (cont)	47531 47535 47539 47638 47765 47788 47797 thru 47799 48022 48027 48044 and 48045 48056 48062 and 48063 48066 48073 and 48074 48111 thru 48113 49102 49112 thru 49114 49116 thru 49118 49120 thru 49122 49125 49127 49222 49229 49246 49249 and 49250 49260 thru 49265 49370 and 49371 49393 and 49394 49439 49441 49444 49450 49478 thru 49494 49525 and 49526 49580 thru 49582 49634 and 49635	DL (cont)	53241 thru 53243 53257 thru 53259 53266 thru 53268 53273 and 53274 53311 thru 53313 53338 and 53339 53341 thru 53346 53362 thru 53364 53370 thru 53372 53378 thru 53380 53409 and 53410
		EA	45733 and 45734 45833 and 45834 45837 45863 thru 45865 47120 47181 47215 47327 and 47328 47677 47682
		EF	49807 53064 thru 53066 53118 and 53119
		EZ	47044 47061 47191 47194 47220 47279 47355 47414
		FP	45702
DL	49532 thru 49546 49573 49583 and 49584 49591 49644 thru 49646 49705 49711 thru 49723 49810 thru 49819 49878 thru 49887 49976 thru 49984 53115 and 53116 53161 53172 and 53173 53214 and 53215	GA	47385 and 47386 47481 47569 47601 47635 47701 47722 47730 47740 47744 47789 thru 47795

DOUGLAS AIRCRAFT COMPANY SERVICE BULLETIN

<u>Operator</u>	<u>Factory Serial No.</u>	<u>Operator</u>	<u>Factory Serial No.</u>
GB	45717	HA	47204
	45728		47654
	45874		47658
	47003 and 47004		47661
	47008 and 47009		47689
	47040		47726
	47065		47735
	47072		47742
	47074		47763 and 47764
	47084		47784
	47147 and 47148		47796
	47165		48122
	47176	IB	47037
	47201		47079
	47203		47088 and 47089
	47257 and 47258		47093
	47269		47312 and 47313
	47273		47365
	47291		47368
	47314		47446 and 47447
	47317		47453 and 47454
	47325		47456
	47363 and 47364	IG	47702
	47380 and 47381		47706
	47384		48103
	47403		49827 thru 49843
	47413		53207 thru 53213
	47419		
	47426 and 47427		
	47462		47655 thru 47657
	47464 and 47465		47713 thru 47715
	47494		49247 and 49248
	47497 thru 47499		49531
	47509 thru 47512		49669
	47522		49740
	47528		49902 and 49903
	47543	JD	47760 thru 47762
	47550 thru 47552		47767 and 47768
	47608		47780 and 47781
	47612		48029 thru 48033
	47615 and 47616		48070 thru 48072
	47619 and 47620		49280 thru 49283
	47759		49461 thru 49467
			49820 and 49821
			49907 and 49908
			53039 thru 53043
GH	47755		

May 18/92

Bulletin 27-321

Revision 1 January 31/94

Page 5

DOUGLAS AIRCRAFT COMPANY SERVICE BULLETIN

<u>Operator</u>	<u>Factory Serial No.</u>	<u>Operator</u>	<u>Factory Serial No.</u>
JP	47239	NK	47268
	47392		47478
	47530		47526
	47570		47547
	48046	NW	45705
	48048		45707
	48087		45729
	49379		45744 and 45745
	49440		45747 thru 45749
JU	47460		45770
	47470		45787
	47532		45790
	47562 and 47563		45825
	47567 and 47568		45827
	47571		45829 thru 45832
	47582		47017 and 47018
KE	49373 and 49374		47031
	49416 thru 49419		47042
	49785		47049
	49787		47063 and 47064
			47073
LM	49123 and 49124		47078
	49661		47083
LV			47097
	47000		47103
	47121		47114 thru 47117
	47703		47138 and 47139
	47705		47141 thru 47145
	47712		47149 and 47150
	47719		47155
	47721		47158
	47727		47160
	47736 thru 47738		47162 thru 47164
	47752		47171
	47770		47175
	47782		47178 thru 47180
	49395		47182 and 47183
	49567		47185
	49659		47205 and 47206
ML			47244
	45835 and 45836		47246 and 47247
	45838 thru 45840		47252 thru 47256
	45866 and 45867		47263 and 47264
	45869		47280
	45876		47282
	47140		47286 thru 47288
	47157		47315 and 47316
	47167 thru 47170		47337 and 47338
	47186		47346 and 47347
	47548		47362
	49727		47369 and 47370
			47376

Bulletin 27-321

May 18/92

Page 6

Revision 1 January 31/94

DOUGLAS AIRCRAFT COMPANY SERVICE BULLETIN

<u>Operator</u>	<u>Factory Serial No.</u>		<u>Operator</u>	<u>Factory Serial No.</u>	
NW (cont)	47382	and 47383	RS	45715	and 45716
	47389	thru 47391		45721	and 45722
	47395	and 47396		45735	
	47404	thru 47406		45742	
	47415	thru 47417		45776	
	47425			45780	and 45781
	47439	and 47440		45783	
	47450			47048	
	47458	and 47459		47125	
	47469			47127	
	47472	and 47473	SK	47301	thru 47303
	47479	and 47480		47305	thru 47308
	47517			47360	and 47361
	47566			47492	and 47493
	47572	and 47573		47513	
	47647			47596	and 47597
	47651	and 47652		47599	
	47659	and 47660		47610	
	47664			47623	and 47624
	47708	thru 47710		47626	thru 47634
	47716	thru 47718		47646	
	47724			47725	
	47729			47747	and 47748
	47739			47750	
	47756	thru 47758		47766	
	47769			47777	thru 47779
	47774	thru 47776		49380	thru 49383
	47785	thru 47787		49420	thru 49423
	48054	and 48055		49436	thru 49438
	48057			49554	and 49555
	48086			49603	
	48088	and 48089		49605	thru 49614
	48091			49728	
	48100	thru 48102		49909	thru 49914
	48107	thru 48110		49998	and 49999
	48121			53000	thru 53002
	48148	and 48149		53004	thru 53011
	49110			53275	
OS	48015	thru 48021		53294	thru 53296
	48059			53314	and 53315
	49115			53336	and 53337
	49164			53340	
	49278	and 49279		53347	and 53348
	49372			53365	
	49411	thru 49414		53368	
	49877		SR	48002	thru 48014
	49888			49100	
	49933			49356	thru 49359
	53245			49570	thru 49572
				49844	
				53149	and 53150

May 18/92

Bulletin 27-321

Revision 1 January 31/94

Page 7

DOUGLAS AIRCRAFT COMPANY SERVICE BULLETIN

<u>Operator</u>	<u>Factory Serial No.</u>	<u>Operator</u>	<u>Factory Serial No.</u>
TI	47016	US	45846
			45868
TK	45774		47020
	47397		47023
	47442		47026
	47451		47050 thru 47054
	47488 and 47489		47057 and 47058
	47534		47066
	47674		47068
	47723		47099
			47130
			47146
TW	45772 and 45773		47188 and 47189
	45798 and 45799		47207 thru 47210
	47001		47212
	47027 thru 47030		47216
	47033		47310
	47035		47332
	47082		47334 thru 47336
	47095 and 47096		47351 and 47352
	47107 thru 47109		47371 thru 47375
	47134 thru 47137		47420 and 47421
	47172 thru 47174		47429
	47248 thru 47251		47505
	47324		47507 and 47508
	47343 thru 47345		47564
	47357		47574
	47409		47576
	47411 and 47412		47583
	47491		47588
	47589		47590
	47603		47593
	47617 and 47618		48026
	47669		48028
	47676		48034 thru 48043
	47711		48049
	47734		48052 and 48053
	48123 and 48124		48092 thru 48099
	49153 and 49154		48114 thru 48120
	49156 and 49157		48131
	49160		48138 thru 48147
	49165 and 49166		48154 thru 48159
	49169 and 49170		49119
	49182 thru 49187		49138 and 49139
	49230		49142 and 49143
	49245		49237
	49266 and 49267		49429
	49366 thru 49369		49443
	49426 and 49427		
	49527 thru 49530		
	49701 thru 49704		
	53137 thru 53141		

DOUGLAS AIRCRAFT COMPANY SERVICE BULLETIN

<u>Operator</u>	<u>Factory Serial No.</u>	<u>Operator</u>	<u>Factory Serial No.</u>
VC	45875 47036 47098 47272 47330 and 47331 47399 47401 47679 47743 47745	XYX	45696 45711 45718 45725 45727 45795 45841 and 45842 47102 47132 and 47133 47190 48132 and 48133 49760 49762
VE	45710 47104 and 47105 47665 47683 47685 47692	XZA	49724 49779 and 49780 49845 49848
WU	49624 49985	XZD	45826 47011 47152 47418
XGN	49808		
XLL	47672 and 47673 47680 49402 49449 49602 49670 and 49671 49767 thru 49769 49846 and 49847 49854 49856 and 49857 53012 thru 53015	X5A	45828 47012 47014 47055 47062 47086 47153
XQQ	49424 49604 49615 49788 49793 49931 and 49932 53044 thru 53046 53124	X7C	49792
		YA	45732
		YBB	49101 49277 49569 49930
		YFD	49725 49778
XRI	49391 and 49392 49628 and 49629	YGA	49398 49619 and 49620
XX1	45844	YHG	53121

May 18/92

Bulletin 27-321

Revision 1 January 31/94

Page 9

DOUGLAS AIRCRAFT COMPANY SERVICE BULLETIN

<u>Operator</u>	<u>Factory Serial No.</u>	<u>Operator</u>	<u>Factory Serial No.</u>
YPA	49384 49556 and 49557	ZIG	47595 47600
YUZ	45720	ZIL	45698 and 45699 47060
ZAF	47241 and 47242 47295 47297 thru 47300 47366 and 47367 47448 and 47449 47467 47471 47475 47495 47536 thru 47538 47540 and 47541 47668 47670 and 47671	ZJ6	45775
		ZKG	47690 49809
		ZKL	47045 47154
		ZK7	45740
		ZL1	49576 49662 49707 49822 and 49823 49968 49986
ZBM	47087		
ZBN	49852		
ZB2	47259 47276	ZMF	47260 thru 47262 47278 47319 47686 47688 47693 47728 47731 thru 47733 47746 47749 47751 47753
ZCA	45714 45736 45743 45785 and 45786 47043 47059 47085 47122 47126		
ZCP	47151	ZNV	47041 47221 47410 47428 47431 47474 47476 and 47477 47496 47545 47565 47577 and 47578 47580 and 47581 47584 thru 47587 47639 47681
ZDF	45872 and 45873 47270 and 47271		
ZD9	49935 thru 49937 49940 and 49941 49949 49951 and 49952		
ZEZ	47525		
ZE9	47527		
ZGM	45778 45782 45784		

DOUGLAS AIRCRAFT COMPANY SERVICE BULLETIN

<u>Operator</u>	<u>Factory Serial No.</u>	<u>Operator</u>	<u>Factory Serial No.</u>
ZNV (cont)	47684 47687 47698 thru 47700 48137 48165 and 48166	Z1J	49144 49401 49574 49626 49631 49642 49668 49777 49791 49943 49950
ZOQ	47274 47284		
ZO8	47161 47402		
ZO9	48051 48058	Z2L	47663
ZQE	49442 49708	Z3V	49585 thru 49587 49641 49710
ZQF	49663	Z3Z	45703 45723 47156
ZQO	47193 47408		
ZQU	49901	Z4B	45695
ZQY	47166 47187 47214	Z4Q	49759 49766
		Z4U	47529
ZQ2	45731	Z5B	47007 47323 47358
ZQ4	49385		
ZQ9	47005 47131 47202 47326 47329	Z5F	47783
		Z5X	47119
ZRS	45797	Z5Y	45737 45741 45779 45843 47662
ZWH	47466 47486 47516	Z6H	45871 47217

May 18/92

Bulletin 27-321

Revision 1 January 31/94

Page 11

DOUGLAS AIRCRAFT COMPANY SERVICE BULLETIN

<u>Operator</u>	<u>Factory Serial No.</u>	<u>Operator</u>	<u>Factory Serial No.</u>
Z6K	49389 49396 and 49397 49578 49623 49706 49938 53198 and 53199	Z8H	45706
		Z9R	49577 49579 49621 and 49622 49627 49630 49672 49790 49900
Z6R	47438 47697 47754		
Z7B	45730	Z9U	49399 49617 and 49618 49709 49855
Z7R	47514		
Z8F	47010 47015	1K	47013

(b) Other Aircraft:

Factory Serial No.

47177
47275
47277
47285
47318
47320 thru 47322
47359
47377 thru 47379
47443 thru 47445
49388

NOTE: Aircraft listed under Other Aircraft are affected by this Service Bulletin but were not assigned to any specific operator at time of Service Bulletin issue.

DOUGLAS AIRCRAFT COMPANY SERVICE BULLETIN

(c) Manufacturer's Fuselage and Factory Serial Numbers:

<u>FUS</u>	<u>(FSN)</u>	<u>FUS</u>	<u>(FSN)</u>	<u>FUS</u>	<u>(FSN)</u>	<u>FUS</u>	<u>(FSN)</u>	<u>FUS</u>	<u>(FSN)</u>	<u>FUS</u>	<u>(FSN)</u>
1	(45695)	56	(45739)	111	(47063)	161	(47073)	212	(47140)	263	(47172)
2	(45696)	57	(45770)	112	(45846)	163	(47079)	213	(47113)	264	(45790)
4	(45711)	59	(45798)	113	(47019)	164	(47080)	214	(47131)	265	(47166)
5	(45698)	60	(45734)	114	(45782)	165	(47044)	215	(47134)	266	(47167)
6	(45712)	61	(45706)	115	(47012)	167	(47110)	216	(47155)	267	(47181)
7	(45714)	62	(45740)	116	(45839)	168	(47046)	217	(45789)	268	(47313)
8	(45699)	63	(45723)	117	(45840)	169	(47139)	218	(47114)	269	(47065)
9	(45713)	64	(45785)	118	(47050)	170	(47152)	219	(47086)	270	(47072)
10	(45715)	65	(45795)	119	(47026)	171	(45788)	220	(47104)	271	(47182)
13	(45716)	66	(45741)	120	(47064)	172	(47040)	221	(47105)	272	(47183)
14	(45728)	67	(45825)	121	(47037)	173	(47016)	223	(47062)	273	(47173)
15	(45702)	68	(45829)	122	(47057)	174	(47030)	224	(47122)	275	(47185)
16	(45729)	69	(45799)	123	(47058)	175	(47069)	225	(47129)	276	(47186)
17	(45718)	70	(45707)	124	(45863)	176	(47070)	226	(47146)	277	(47121)
18	(45719)	71	(45775)	125	(47059)	177	(47083)	227	(47141)	278	(47195)
19	(45725)	72	(45776)	126	(47020)	178	(47035)	228	(47156)	279	(47314)
20	(45717)	73	(45833)	127	(45787)	179	(47084)	229	(47132)	280	(47191)
21	(45703)	75	(45830)	128	(45783)	180	(47088)	230	(47133)	281	(47241)
23	(45842)	76	(45831)	129	(47013)	181	(47082)	232	(47142)	282	(47187)
25	(45735)	79	(45826)	130	(45864)	182	(47111)	233	(47135)	283	(45867)
26	(45742)	81	(47004)	131	(47051)	183	(47047)	234	(47087)	284	(47150)
27	(45720)	82	(45778)	132	(47027)	184	(47045)	235	(47106)	285	(47151)
28	(45843)	83	(47000)	133	(47021)	185	(47153)	236	(47107)	286	(47174)
29	(45743)	84	(45832)	134	(47076)	186	(47017)	237	(47093)	290	(45868)
30	(45772)	85	(45834)	135	(45827)	187	(47031)	238	(47143)	291	(47188)
31	(45744)	86	(47003)	136	(47038)	188	(47071)	239	(47144)	292	(47246)
32	(45745)	87	(47007)	137	(45865)	189	(47089)	240	(47190)	293	(47207)
33	(45844)	88	(47043)	138	(45866)	190	(47090)	241	(47160)	294	(47252)
34	(45731)	90	(45786)	139	(47085)	191	(47095)	242	(45828)	295	(47253)
35	(47048)	91	(45845)	140	(45784)	192	(47096)	243	(47136)	296	(47220)
37	(45730)	92	(45779)	141	(47014)	193	(47097)	244	(47251)	297	(47249)
39	(45773)	93	(45780)	142	(47052)	194	(47055)	245	(47204)	298	(47175)
40	(45747)	94	(47001)	143	(47067)	195	(47101)	246	(47148)	299	(47222)
41	(45732)	95	(45835)	144	(47022)	197	(47099)	247	(47145)	300	(47223)
42	(47049)	96	(45836)	145	(47028)	198	(47102)	248	(47158)	301	(47254)
43	(45727)	97	(47010)	146	(47078)	199	(47112)	249	(47161)	302	(47198)
44	(45721)	98	(47008)	147	(47033)	200	(47041)	250	(47205)	303	(47189)
45	(45736)	99	(47006)	149	(47094)	201	(47154)	251	(47108)	304	(47242)
46	(45841)	100	(45710)	150	(47066)	202	(47149)	252	(47109)	305	(47221)
47	(45748)	101	(45781)	151	(47005)	203	(47018)	255	(47162)	306	(47214)
48	(45733)	102	(47011)	152	(47009)	205	(47103)	256	(47163)	307	(47208)
49	(45737)	103	(45837)	154	(47039)	206	(47091)	257	(47248)	308	(47116)
50	(45749)	104	(45838)	156	(47015)	207	(47061)	258	(47137)	309	(47250)
51	(45797)	107	(47053)	157	(47029)	208	(47147)	259	(47164)	310	(47255)
53	(45705)	108	(47098)	158	(47023)	209	(47120)	260	(47165)	311	(47193)
54	(45738)	109	(47060)	159	(47024)	210	(47128)	261	(47115)	312	(47218)
55	(45722)	110	(47054)	160	(47068)	211	(47130)	262	(47312)	313	(47215)

May 18/92

Bulletin 27-321

Revision 1 January 31/94

Page 13

DOUGLAS AIRCRAFT COMPANY SERVICE BULLETIN

<u>FUS</u>	<u>(FSN)</u>	<u>FUS</u>	<u>(FSN)</u>	<u>FUS</u>	<u>(FSN)</u>	<u>FUS</u>	<u>(FSN)</u>	<u>FUS</u>	<u>(FSN)</u>	<u>FUS</u>	<u>(FSN)</u>
314	(47176)	372	(45792)	423	(47168)	479	(47382)	532	(47429)	583	(47517)
315	(47216)	373	(47276)	424	(47169)	480	(47410)	533	(47411)	584	(47465)
316	(47224)	374	(47270)	425	(47170)	482	(47402)	534	(47412)	585	(47445)
317	(47225)	375	(47036)	426	(47318)	483	(47354)	535	(47450)	586	(47505)
318	(47138)	376	(47074)	427	(47281)	484	(47364)	536	(47414)	589	(47425)
319	(47117)	377	(47297)	428	(47232)	485	(47345)	537	(47434)	590	(47469)
320	(47263)	378	(47119)	429	(47233)	486	(47042)	538	(47383)	591	(47470)
321	(47199)	379	(47277)	430	(47399)	487	(47405)	539	(47367)	593	(47523)
322	(47157)	380	(47278)	431	(47350)	488	(47361)	540	(47435)	594	(47507)
323	(47178)	381	(45793)	432	(47303)	489	(47389)	541	(47436)	595	(47508)
324	(47194)	382	(47301)	433	(47315)	490	(47390)	542	(47385)	596	(47472)
325	(47219)	383	(47292)	434	(47319)	491	(47391)	543	(47384)	597	(47280)
326	(47256)	384	(47293)	435	(47234)	492	(47362)	544	(47437)	598	(47473)
327	(47209)	385	(47317)	436	(47235)	493	(47334)	545	(47438)	599	(47491)
328	(47206)	386	(47257)	438	(47300)	494	(47335)	547	(47451)	600	(47474)
329	(47264)	387	(47258)	439	(47316)	495	(47359)	548	(47448)	601	(47494)
330	(47177)	388	(47125)	441	(47305)	496	(47377)	549	(47459)	602	(47419)
331	(45869)	389	(47271)	442	(47351)	497	(47409)	550	(47386)	603	(47526)
333	(47226)	390	(47272)	444	(47401)	498	(47244)	551	(47370)	604	(47497)
335	(47179)	391	(47327)	445	(47363)	499	(47406)	552	(47449)	605	(47479)
336	(45774)	392	(47328)	446	(47282)	500	(47336)	553	(47487)	606	(47522)
337	(47279)	394	(45847)	447	(47392)	501	(47439)	554	(47404)	607	(47480)
339	(47265)	395	(47230)	449	(47310)	502	(47440)	555	(47395)	609	(47430)
340	(47295)	396	(47231)	450	(47236)	504	(47365)	556	(47420)	610	(47535)
341	(47210)	397	(47283)	451	(47237)	505	(47368)	557	(47396)	611	(47468)
342	(47247)	398	(47311)	452	(47355)	506	(47371)	558	(47421)	612	(47478)
343	(47291)	399	(47298)	453	(47352)	507	(47403)	559	(47492)	613	(47477)
344	(45871)	400	(47202)	454	(47320)	508	(47378)	560	(47490)	614	(47518)
345	(45872)	401	(47203)	455	(47321)	509	(47379)	561	(47446)	615	(47519)
347	(47273)	402	(47294)	456	(47322)	511	(47415)	562	(47493)	616	(47481)
348	(47274)	403	(47340)	458	(47394)	512	(47416)	563	(47447)	617	(47528)
349	(45791)	404	(47341)	459	(47201)	513	(47372)	564	(47462)	618	(47527)
350	(45873)	405	(47126)	460	(47343)	514	(47380)	565	(47453)	619	(47514)
351	(45874)	406	(47329)	461	(47332)	515	(47325)	566	(47498)	621	(47466)
352	(47266)	407	(47330)	462	(47306)	516	(47326)	567	(47454)	622	(47547)
353	(47289)	408	(47331)	463	(47307)	517	(47376)	568	(47499)	623	(47550)
354	(47180)	409	(47259)	464	(47346)	518	(47417)	569	(47476)	624	(47530)
355	(47228)	410	(47260)	465	(47238)	519	(47381)	570	(47418)	625	(47529)
356	(47229)	411	(47261)	466	(47239)	520	(47431)	571	(47501)	626	(47532)
359	(47286)	412	(47262)	467	(47408)	521	(47413)	572	(47426)	627	(47460)
360	(47217)	413	(47284)	468	(47323)	522	(47373)	573	(47427)	628	(47486)
363	(47275)	414	(47285)	469	(47324)	523	(47374)	574	(47502)	629	(47521)
364	(47287)	415	(47337)	471	(47353)	524	(47442)	575	(47464)	630	(47516)
365	(45875)	416	(47338)	472	(47344)	525	(47432)	576	(47422)	631	(47525)
366	(45876)	417	(47127)	473	(47171)	526	(47433)	577	(47443)	632	(47524)
367	(47290)	418	(47342)	474	(47308)	527	(47488)	578	(47444)	633	(47548)
368	(47212)	419	(47348)	475	(47360)	528	(47489)	579	(47455)	634	(47551)
369	(47288)	420	(47349)	476	(47357)	529	(47369)	580	(47456)	635	(47520)
370	(47268)	421	(47299)	477	(47358)	530	(47366)	581	(47423)	636	(47397)
371	(47269)	422	(47302)	478	(47347)	531	(47375)	582	(47424)	637	(47539)

DOUGLAS AIRCRAFT COMPANY SERVICE BULLETIN

<u>FUS</u>	<u>(FSN)</u>	<u>FUS</u>	<u>(FSN)</u>	<u>FUS</u>	<u>(FSN)</u>	<u>FUS</u>	<u>(FSN)</u>	<u>FUS</u>	<u>(FSN)</u>	<u>FUS</u>	<u>(FSN)</u>
638	(47531)	690	(47574)	744	(47629)	799	(47688)	852	(47739)	902	(47784)
639	(47549)	691	(47566)	745	(47630)	800	(47686)	853	(47724)	903	(47796)
640	(47552)	692	(47581)	747	(47614)	801	(47699)	854	(47729)	904	(47785)
641	(47533)	694	(47573)	748	(47632)	802	(47689)	855	(47748)	905	(47786)
642	(47553)	695	(47571)	749	(47642)	803	(47692)	856	(47754)	906	(47789)
643	(47509)	696	(47584)	750	(47643)	804	(47693)	857	(47742)	907	(47790)
644	(47534)	697	(47583)	751	(47615)	805	(47694)	858	(47728)	908	(47791)
645	(47510)	698	(47585)	752	(47633)	806	(47695)	859	(47743)	910	(47792)
646	(47458)	699	(47588)	754	(47635)	807	(47659)	860	(47731)	911	(47793)
647	(47467)	700	(47587)	755	(47646)	808	(47696)	861	(47732)	912	(47787)
648	(47484)	701	(47582)	756	(47634)	809	(47698)	862	(47733)	913	(47797)
650	(47471)	702	(47578)	757	(47654)	810	(47660)	863	(47745)	914	(47798)
651	(47504)	703	(47590)	759	(47616)	811	(47700)	864	(47746)	915	(47794)
652	(47542)	704	(47580)	760	(47653)	812	(47661)	865	(47749)	916	(47795)
653	(47475)	705	(47593)	761	(47648)	813	(47708)	866	(47751)	918	(47799)
654	(47543)	706	(47591)	762	(47617)	814	(47709)	867	(47753)	919	(48114)
655	(47546)	707	(47586)	763	(47655)	815	(47712)	868	(47734)	920	(48115)
656	(47495)	708	(47572)	764	(47618)	816	(47697)	869	(47735)	921	(48116)
657	(47556)	709	(47595)	765	(47668)	817	(47702)	870	(47750)	922	(48117)
658	(47554)	710	(47600)	767	(47644)	818	(47710)	871	(47759)	923	(48111)
659	(47536)	711	(47589)	768	(47619)	819	(47704)	872	(47752)	924	(48015)
660	(47452)	712	(47592)	769	(47670)	820	(47713)	873	(47756)	925	(48103)
661	(47557)	713	(47597)	771	(47650)	821	(47706)	874	(47760)	926	(48112)
662	(47537)	714	(47596)	772	(47666)	822	(47701)	875	(47761)	927	(48100)
663	(47461)	715	(47601)	773	(47647)	823	(47707)	876	(47762)	928	(48104)
664	(47560)	716	(47599)	774	(47671)	824	(47714)	877	(47757)	929	(48105)
665	(47538)	717	(47594)	775	(47664)	825	(47715)	878	(47755)	930	(48113)
666	(47485)	718	(47602)	776	(47669)	826	(47722)	879	(47763)	931	(48101)
667	(47555)	719	(47598)	777	(47620)	827	(47736)	880	(47758)	932	(48102)
668	(47540)	720	(47603)	778	(47672)	828	(47730)	881	(47769)	933	(48106)
669	(47428)	721	(47607)	779	(47673)	829	(47737)	882	(47764)	934	(48123)
670	(47541)	722	(47604)	780	(47651)	830	(47738)	883	(47771)	935	(48121)
671	(47545)	723	(47609)	781	(47680)	831	(47725)	884	(47774)	936	(48107)
672	(47559)	724	(47605)	782	(47675)	832	(47716)	885	(47767)	937	(48108)
673	(47496)	725	(47610)	783	(47656)	833	(47717)	886	(47766)	938	(48002)
675	(47565)	726	(47611)	784	(47681)	834	(47718)	887	(47768)	939	(48109)
676	(47544)	727	(47606)	785	(47676)	835	(47740)	888	(47775)	940	(48131)
677	(47511)	728	(47623)	786	(47684)	837	(47744)	889	(47776)	941	(48016)
678	(47512)	730	(47638)	787	(47657)	838	(47723)	890	(47772)	942	(48118)
679	(47513)	731	(47637)	788	(47682)	839	(47747)	891	(47773)	943	(48119)
680	(47575)	732	(47608)	789	(47678)	841	(47703)	892	(47770)	944	(48003)
681	(47564)	733	(47624)	790	(47658)	842	(47705)	893	(47782)	945	(48110)
682	(47576)	734	(47640)	791	(47677)	843	(47690)	894	(47780)	946	(48034)
683	(47569)	735	(47639)	792	(47683)	844	(47711)	895	(47781)	947	(48125)
684	(47570)	736	(47612)	793	(47674)	845	(47719)	896	(47777)	948	(48024)
685	(47562)	738	(47626)	794	(47685)	847	(47721)	897	(47778)	949	(48120)
686	(47577)	739	(47627)	795	(47687)	848	(47727)	898	(47779)	950	(48004)
687	(47563)	740	(47628)	796	(47665)	849	(47726)	899	(47783)	951	(48126)
688	(47567)	742	(47613)	797	(47679)	850	(47662)	900	(47765)	952	(48025)
689	(47568)	743	(47631)	798	(47652)	851	(47663)	901	(47788)	953	(48029)

May 18/92

Bulletin 27-321

Revision 1 January 31/94

Page 15

DOUGLAS AIRCRAFT COMPANY SERVICE BULLETIN

<u>FUS</u>	<u>(FSN)</u>	<u>FUS</u>	<u>(FSN)</u>	<u>FUS</u>	<u>(FSN)</u>	<u>FUS</u>	<u>(FSN)</u>	<u>FUS</u>	<u>(FSN)</u>	<u>FUS</u>	<u>(FSN)</u>
954	(48124)	1006	(48040)	1057	(48096)	1107	(49159)	1157	(49255)	1207	(49371)
955	(48035)	1007	(48055)	1058	(48159)	1108	(49160)	1158	(49256)	1208	(49374)
956	(48132)	1008	(48041)	1059	(48097)	1109	(49161)	1159	(49262)	1209	(49284)
957	(48005)	1009	(48042)	1060	(48098)	1110	(49162)	1160	(49257)	1210	(49291)
958	(48017)	1010	(48043)	1061	(49116)	1111	(49163)	1161	(49258)	1211	(49292)
959	(48133)	1011	(48072)	1062	(49110)	1112	(49171)	1162	(49259)	1212	(49293)
960	(48026)	1012	(48056)	1063	(49117)	1113	(49172)	1163	(49263)	1213	(49294)
961	(48127)	1013	(48014)	1064	(49111)	1114	(49173)	1164	(49269)	1214	(49295)
962	(48030)	1014	(48150)	1065	(49118)	1115	(49174)	1165	(49270)	1215	(49296)
963	(48036)	1015	(48062)	1066	(49114)	1116	(49175)	1166	(49271)	1216	(49297)
964	(48128)	1016	(48079)	1067	(48099)	1117	(49165)	1167	(49272)	1217	(49298)
965	(48037)	1017	(48151)	1068	(49112)	1118	(49169)	1168	(49273)	1218	(49299)
966	(48006)	1018	(48073)	1069	(49113)	1119	(49170)	1169	(49252)	1219	(49300)
967	(48044)	1019	(48066)	1070	(49119)	1120	(49176)	1170	(49202)	1220	(49301)
968	(48129)	1020	(48063)	1071	(49120)	1121	(49177)	1171	(49264)	1221	(49302)
969	(48031)	1021	(48138)	1072	(49121)	1122	(49178)	1172	(49188)	1222	(49303)
970	(48045)	1022	(48080)	1073	(49122)	1123	(49179)	1173	(49189)	1223	(49304)
971	(48007)	1023	(48057)	1074	(49125)	1124	(49180)	1174	(49203)	1224	(49355)
972	(48122)	1024	(48139)	1075	(49123)	1125	(49181)	1175	(49286)	1225	(49380)
973	(48027)	1025	(49100)	1076	(49102)	1126	(49192)	1176	(49287)	1226	(49305)
974	(48052)	1026	(48074)	1077	(49124)	1127	(49193)	1177	(49231)	1227	(49306)
975	(48051)	1027	(48140)	1078	(48021)	1128	(49182)	1178	(49232)	1228	(49307)
976	(48130)	1028	(48067)	1079	(48022)	1129	(49183)	1179	(49204)	1229	(49308)
977	(48046)	1029	(48086)	1080	(49126)	1130	(49194)	1180	(49190)	1230	(49279)
978	(48032)	1030	(48141)	1081	(48165)	1131	(49184)	1181	(49277)	1231	(49381)
979	(48028)	1031	(48068)	1082	(49127)	1132	(49185)	1182	(49164)	1232	(49382)
980	(48134)	1032	(48069)	1083	(49103)	1133	(49186)	1183	(49278)	1233	(49212)
981	(48008)	1033	(48142)	1084	(48166)	1134	(49187)	1184	(49205)	1234	(49235)
982	(48137)	1034	(48092)	1085	(49104)	1135	(49115)	1185	(49265)	1235	(49236)
983	(48049)	1035	(48087)	1086	(49149)	1136	(49195)	1186	(49250)	1236	(49383)
984	(48148)	1036	(48143)	1087	(49150)	1137	(49196)	1187	(49288)	1237	(49384)
985	(48009)	1037	(48088)	1088	(49151)	1138	(49197)	1188	(49206)	1238	(49266)
986	(48053)	1038	(48089)	1089	(49152)	1139	(49222)	1189	(49207)	1239	(49267)
987	(48135)	1039	(48144)	1090	(49138)	1140	(49229)	1190	(49208)	1240	(49425)
988	(48033)	1041	(48091)	1091	(49139)	1141	(49230)	1191	(49209)	1241	(49428)
990	(48149)	1042	(48145)	1092	(49140)	1142	(49198)	1192	(49210)	1242	(49429)
991	(48058)	1043	(48083)	1093	(49141)	1143	(49199)	1193	(49289)	1243	(49213)
992	(48010)	1044	(48146)	1094	(49142)	1144	(49237)	1194	(49280)	1244	(49385)
993	(48136)	1045	(48020)	1095	(49143)	1145	(49245)	1195	(49290)	1245	(49214)
994	(48011)	1046	(48154)	1096	(49144)	1146	(49246)	1196	(49366)	1246	(49309)
995	(48018)	1047	(48059)	1097	(49145)	1147	(49200)	1197	(49367)	1247	(49310)
996	(48054)	1048	(48147)	1098	(49166)	1148	(49201)	1198	(49368)	1248	(49311)
997	(48012)	1049	(48093)	1099	(49167)	1149	(49249)	1199	(49369)	1249	(49312)
999	(48070)	1050	(48155)	1100	(49168)	1150	(49260)	1200	(49281)	1250	(49356)
1000	(48013)	1051	(49101)	1101	(49153)	1151	(49247)	1201	(49373)	1251	(49357)
1001	(48019)	1052	(48156)	1102	(49154)	1152	(49248)	1202	(49211)	1252	(49372)
1002	(48038)	1053	(48094)	1103	(49155)	1153	(49261)	1203	(49233)	1253	(49215)
1003	(48039)	1054	(48157)	1104	(49156)	1154	(49251)	1204	(49234)	1254	(49420)
1004	(48071)	1055	(48095)	1105	(49157)	1155	(49253)	1205	(49379)	1255	(49313)
1005	(48048)	1056	(48158)	1106	(49158)	1156	(49254)	1206	(49370)	1256	(49314)

DOUGLAS AIRCRAFT COMPANY SERVICE BULLETIN

<u>FUS</u>	<u>(FSN)</u>	<u>FUS</u>	<u>(FSN)</u>	<u>FUS</u>	<u>(FSN)</u>	<u>FUS</u>	<u>(FSN)</u>	<u>FUS</u>	<u>(FSN)</u>	<u>FUS</u>	<u>(FSN)</u>
1257	(49315)	1307	(49332)	1357	(49401)	1407	(49459)	1457	(49585)	1507	(49594)
1258	(49316)	1308	(49481)	1358	(49442)	1408	(49460)	1458	(49571)	1508	(49673)
1259	(49317)	1309	(49482)	1359	(49461)	1409	(49468)	1459	(49657)	1509	(49595)
1260	(49415)	1310	(49219)	1360	(49491)	1410	(49469)	1460	(49559)	1510	(49596)
1261	(49402)	1311	(49333)	1361	(49492)	1411	(49582)	1461	(49658)	1511	(49597)
1262	(49216)	1312	(49334)	1362	(49531)	1412	(49411)	1462	(49560)	1512	(49607)
1263	(49421)	1313	(49448)	1363	(49504)	1413	(49574)	1463	(49671)	1513	(49598)
1264	(49422)	1314	(49483)	1364	(49493)	1414	(49575)	1464	(49617)	1514	(49510)
1265	(49318)	1315	(49484)	1365	(49538)	1415	(49556)	1465	(49579)	1515	(49599)
1266	(49319)	1316	(49485)	1366	(49539)	1416	(49541)	1466	(49667)	1516	(49600)
1267	(49320)	1317	(49486)	1367	(49567)	1417	(49470)	1467	(49668)	1517	(49609)
1268	(49217)	1318	(49439)	1368	(49494)	1418	(49471)	1468	(49572)	1518	(49501)
1269	(49390)	1319	(49220)	1369	(49580)	1419	(49634)	1469	(49573)	1519	(49613)
1270	(49391)	1320	(49335)	1370	(49344)	1420	(49635)	1470	(49583)	1520	(49647)
1271	(49416)	1321	(49336)	1371	(49345)	1421	(49642)	1471	(49584)	1521	(49648)
1272	(49392)	1322	(49441)	1372	(49346)	1422	(49576)	1472	(49586)	1522	(49611)
1273	(49321)	1323	(49444)	1373	(49347)	1423	(49643)	1473	(49644)	1523	(49713)
1274	(49218)	1324	(49450)	1374	(49348)	1424	(49412)	1474	(49561)	1524	(49714)
1275	(49363)	1325	(49337)	1375	(49349)	1425	(49507)	1475	(49562)	1525	(49405)
1276	(49364)	1326	(49388)	1376	(49350)	1426	(49472)	1476	(49464)	1526	(49649)
1277	(49365)	1327	(49338)	1377	(49431)	1427	(49473)	1477	(49462)	1527	(49650)
1278	(49417)	1328	(49339)	1378	(49432)	1428	(49433)	1478	(49701)	1528	(49651)
1279	(49393)	1329	(49340)	1379	(49554)	1429	(49662)	1479	(49702)	1529	(49652)
1280	(49322)	1330	(49221)	1380	(49568)	1430	(49404)	1480	(49645)	1530	(49715)
1281	(49323)	1331	(49397)	1381	(49505)	1431	(49474)	1481	(49646)	1531	(49716)
1282	(49282)	1332	(49398)	1382	(49527)	1432	(49475)	1482	(49509)	1532	(49717)
1283	(49423)	1333	(49389)	1383	(49528)	1433	(49542)	1483	(49619)	1533	(49718)
1284	(49424)	1334	(49430)	1384	(49581)	1434	(49543)	1484	(49620)	1534	(49653)
1285	(49394)	1335	(49487)	1385	(49351)	1435	(49602)	1485	(49563)	1535	(49654)
1286	(49395)	1336	(49341)	1386	(49352)	1436	(49557)	1486	(49564)	1536	(49655)
1287	(49386)	1337	(49342)	1387	(49353)	1437	(49663)	1487	(49707)	1537	(49511)
1288	(49387)	1338	(49532)	1388	(49451)	1438	(49659)	1488	(49463)	1538	(49626)
1289	(49324)	1339	(49343)	1389	(49452)	1439	(49476)	1489	(49703)	1539	(49822)
1290	(49325)	1340	(49525)	1390	(49453)	1440	(49570)	1490	(49704)	1540	(49823)
1291	(49443)	1341	(49533)	1391	(49454)	1441	(49477)	1491	(49705)	1541	(49587)
1292	(49501)	1342	(49526)	1392	(49455)	1442	(49603)	1492	(49711)	1542	(49709)
1293	(49478)	1343	(49399)	1393	(49456)	1443	(49544)	1493	(49669)	1543	(49615)
1294	(49358)	1344	(49534)	1394	(49418)	1444	(49545)	1494	(49672)	1544	(49549)
1295	(49326)	1345	(49437)	1395	(49540)	1445	(49660)	1495	(49621)	1545	(49656)
1296	(49327)	1346	(49503)	1396	(49529)	1446	(49434)	1496	(49565)	1546	(49675)
1297	(49479)	1347	(49535)	1397	(49530)	1447	(49546)	1497	(49566)	1547	(49710)
1298	(49480)	1348	(49536)	1398	(49457)	1448	(49591)	1498	(49622)	1548	(49512)
1299	(49283)	1349	(49359)	1399	(49426)	1449	(49508)	1499	(49623)	1549	(49724)
1300	(49502)	1350	(49488)	1400	(49506)	1450	(49553)	1500	(49712)	1550	(49676)
1301	(49328)	1351	(49489)	1401	(49427)	1451	(49558)	1501	(49605)	1551	(49677)
1302	(49329)	1352	(49490)	1402	(49555)	1452	(49661)	1502	(49624)	1552	(49725)
1303	(49436)	1353	(49438)	1403	(49419)	1453	(49670)	1503	(49625)	1553	(49728)
1304	(49440)	1354	(49449)	1404	(49403)	1454	(49577)	1504	(49435)	1554	(49824)
1305	(49396)	1355	(49537)	1405	(49569)	1455	(49578)	1505	(49592)	1555	(49678)
1306	(49331)	1356	(49400)	1406	(49458)	1456	(49604)	1506	(49593)	1556	(49614)

May 18/92

Bulletin 27-321

Revision 1 January 31/94

Page 17

DOUGLAS AIRCRAFT COMPANY SERVICE BULLETIN

<u>FUS</u>	<u>(FSN)</u>	<u>FUS</u>	<u>(FSN)</u>	<u>FUS</u>	<u>(FSN)</u>	<u>FUS</u>	<u>(FSN)</u>	<u>FUS</u>	<u>(FSN)</u>	<u>FUS</u>	<u>(FSN)</u>
1557	(49679)	1607	(49733)	1657	(49766)	1707	(49896)	1757	(49972)	1807	(49851)
1558	(49680)	1608	(49816)	1658	(49519)	1708	(49897)	1758	(49923)	1808	(53161)
1559	(49769)	1609	(49515)	1659	(49912)	1709	(49898)	1759	(49924)	1809	(53022)
1560	(49681)	1610	(49726)	1660	(49800)	1710	(49978)	1760	(49987)	1810	(53172)
1561	(49708)	1611	(49618)	1661	(49801)	1711	(49979)	1761	(49889)	1811	(53173)
1562	(49682)	1612	(49817)	1662	(49802)	1712	(49980)	1762	(49973)	1812	(53000)
1563	(49683)	1613	(49818)	1663	(49803)	1713	(49796)	1763	(49842)	1813	(53028)
1564	(49684)	1614	(49706)	1664	(49878)	1714	(49834)	1764	(49934)	1814	(53029)
1565	(49730)	1615	(49821)	1665	(49913)	1715	(49926)	1765	(49900)	1815	(53001)
1566	(49731)	1616	(49925)	1666	(49879)	1716	(49927)	1766	(49901)	1816	(53030)
1567	(49732)	1617	(49641)	1667	(49828)	1717	(49835)	1767	(49905)	1817	(53149)
1568	(49533)	1618	(49740)	1668	(49968)	1718	(53051)	1768	(49988)	1818	(53015)
1569	(49606)	1619	(49734)	1669	(49804)	1719	(49969)	1769	(49989)	1819	(53031)
1570	(49719)	1620	(49760)	1670	(49779)	1720	(49930)	1770	(49990)	1820	(53032)
1571	(49720)	1621	(49727)	1671	(49520)	1721	(49836)	1771	(49843)	1821	(53023)
1572	(49608)	1622	(49516)	1672	(49805)	1722	(49899)	1772	(49849)	1822	(53033)
1573	(49845)	1623	(49761)	1673	(49806)	1723	(49915)	1773	(49935)	1823	(53214)
1574	(49721)	1624	(49762)	1674	(49780)	1724	(49523)	1774	(49974)	1824	(53215)
1575	(49722)	1625	(49909)	1675	(49856)	1725	(49981)	1775	(49975)	1825	(53024)
1576	(49723)	1626	(49763)	1676	(49880)	1726	(49982)	1776	(53044)	1826	(53034)
1577	(49825)	1627	(49784)	1677	(49881)	1727	(49466)	1777	(53045)	1827	(49612)
1578	(49826)	1628	(49785)	1678	(49829)	1728	(49855)	1778	(49936)	1828	(53083)
1579	(49844)	1629	(49819)	1679	(49882)	1729	(49916)	1779	(53018)	1829	(49807)
1580	(49627)	1630	(49741)	1680	(49904)	1730	(49837)	1780	(49991)	1830	(53084)
1581	(49846)	1631	(49786)	1681	(49413)	1731	(53052)	1781	(49992)	1831	(53150)
1582	(49628)	1632	(49764)	1682	(49414)	1732	(49928)	1782	(49993)	1832	(53241)
1583	(49629)	1633	(49517)	1683	(49883)	1733	(49838)	1783	(53019)	1833	(53242)
1584	(49550)	1634	(49777)	1684	(49830)	1734	(49907)	1784	(49937)	1834	(53243)
1585	(49847)	1635	(49735)	1685	(49884)	1735	(49917)	1785	(49938)	1835	(53002)
1586	(49551)	1636	(49787)	1686	(49890)	1736	(53012)	1786	(49906)	1836	(49808)
1587	(49767)	1637	(49788)	1687	(49857)	1737	(49970)	1787	(49939)	1837	(49933)
1588	(49810)	1638	(49910)	1688	(49831)	1738	(53013)	1788	(49940)	1838	(49985)
1589	(49514)	1639	(49795)	1689	(49885)	1739	(49839)	1789	(53020)	1839	(53085)
1590	(49811)	1640	(49736)	1690	(49521)	1740	(53014)	1790	(49994)	1840	(53086)
1591	(49630)	1641	(49737)	1691	(49886)	1741	(49929)	1791	(49995)	1841	(53087)
1592	(49848)	1642	(49789)	1692	(49888)	1742	(49467)	1792	(49996)	1842	(49986)
1593	(49812)	1643	(49790)	1693	(49914)	1743	(49918)	1793	(49941)	1843	(49809)
1594	(49877)	1644	(49791)	1694	(49891)	1744	(49919)	1794	(53046)	1845	(53257)
1595	(49768)	1645	(49765)	1695	(49892)	1745	(49840)	1795	(53115)	1846	(53004)
1596	(49631)	1646	(49778)	1696	(49893)	1746	(49524)	1796	(53116)	1847	(53198)
1597	(49552)	1647	(49518)	1697	(49894)	1747	(49983)	1797	(53017)	1848	(53258)
1598	(49820)	1648	(49738)	1698	(49895)	1748	(49984)	1798	(49850)	1849	(53259)
1599	(49813)	1649	(49739)	1699	(49887)	1749	(49908)	1799	(49942)	1850	(53016)
1600	(49794)	1650	(49797)	1700	(49976)	1750	(49920)	1800	(49998)	1851	(53063)
1601	(49854)	1651	(49798)	1701	(49977)	1751	(49841)	1801	(53021)	1852	(53088)
1602	(49814)	1652	(49799)	1702	(49522)	1752	(49921)	1802	(53025)	1853	(53089)
1603	(49632)	1653	(49911)	1703	(49832)	1753	(49922)	1803	(49999)	1854	(53174)
1604	(49465)	1654	(49827)	1704	(53050)	1754	(49931)	1804	(53026)	1855	(53005)
1605	(49815)	1655	(49792)	1705	(49610)	1755	(49971)	1805	(53027)	1856	(53054)
1606	(49759)	1656	(49793)	1706	(49833)	1756	(49932)	1806	(53053)	1857	(53055)

DOUGLAS AIRCRAFT COMPANY SERVICE BULLETIN

<u>FUS</u>	<u>(FSN)</u>	<u>FUS</u>	<u>(FSN)</u>	<u>FUS</u>	<u>(FSN)</u>	<u>FUS</u>	<u>(FSN)</u>	<u>FUS</u>	<u>(FSN)</u>	<u>FUS</u>	<u>(FSN)</u>	<u>FUS</u>	<u>(FSN)</u>
1858	(53090)	1883	(53155)	1908	(53064)	1933	(53256)	1958	(53363)	1984	(53122)		
1859	(53266)	1884	(53156)	1909	(53251)	1934	(49952)	1959	(49852)	1985	(53348)		
1860	(53267)	1885	(53157)	1910	(53252)	1935	(53141)	1960	(53062)	1986	(53380)		
1861	(53268)	1886	(53138)	1911	(53194)	1936	(53341)	1961	(53364)	1987	(53123)		
1862	(53207)	1887	(49943)	1912	(53311)	1937	(53296)	1962	(53337)	1988	(53076)		
1863	(53091)	1888	(49944)	1913	(49950)	1938	(53066)	1963	(53370)	1989	(53285)		
1864	(53092)	1889	(49945)	1914	(53312)	1939	(53342)	1964	(53120)	1990	(53409)		
1865	(53208)	1890	(53193)	1915	(49951)	1940	(53197)	1965	(53371)	1991	(53124)		
1866	(53151)	1891	(53158)	1916	(53009)	1941	(53343)	1966	(53284)	1992	(53410)		
1867	(53209)	1892	(53159)	1917	(53294)	1942	(53059)	1967	(53340)	1993	(53125)		
1868	(53175)	1893	(53160)	1918	(53246)	1943	(53344)	1968	(53199)	1994	(53178)		
1869	(53006)	1894	(53057)	1919	(53253)	1944	(53060)	1969	(53042)	1995	(53077)		
1870	(53273)	1895	(53008)	1920	(53254)	1945	(53041)	1970	(53372)	1996	(53078)		
1871	(53210)	1896	(53275)	1921	(53010)	1946	(53314)	1971	(53121)	1997	(53179)		
1872	(53137)	1897	(53040)	1922	(53295)	1947	(53315)	1972	(53176)	1998	(53365)		
1873	(53274)	1898	(49946)	1923	(53140)	1948	(49902)	1973	(53177)	2000	(53286)		
1874	(53211)	1899	(53139)	1924	(53313)	1949	(49903)	1974	(53303)	2001	(53305)		
1875	(53152)	1900	(49947)	1925	(53065)	1950	(53345)	1975	(53304)	2002	(53180)		
1876	(53153)	1901	(53244)	1926	(53338)	1951	(53117)	1976	(53074)	2003	(53368)		
1877	(53212)	1902	(53247)	1927	(53058)	1952	(53346)	1977	(53075)	2004	(53079)		
1878	(53154)	1903	(53248)	1928	(53339)	1953	(53336)	1978	(53245)	2005	(53181)		
1879	(53213)	1904	(53249)	1929	(53195)	1954	(53118)	1979	(53347)	2006	(53287)		
1880	(53056)	1905	(49948)	1930	(53196)	1955	(53362)	1980	(53378)	2007	(53203)		
1881	(53039)	1906	(49949)	1931	(53011)	1956	(53119)	1982	(53043)	2009	(53204)		
1882	(53007)	1907	(53250)	1932	(53255)	1957	(53061)	1983	(53379)	2010	(53162)		

Option I of this modification will be incorporated prior to delivery on all applicable DC-9, -81, -82, -83, -87, and MD-88 aircraft, manufacturer's fuselage numbers 1981, 1999, 2008, 2011, and subsequent.

(2) Spares Affected:

Part No.

Key Word

5914190-Any Configuration

Rudder Power Control Valve
and Manifold Assembly

5914066-Any Configuration

Rudder Power Control
Actuator Assembly

B. Reason:

This Service Bulletin provides information and material requirements to incorporate engineering which modifies the rudder power control valve and manifold assembly to add dual locking capability to the slide adjustment retention nut. Retention nut lockwire has been found to have been inadvertently left out during assembly of the valve, a condition addressed by inspections per previous Service Bulletins. Loss or backing off of the retention nut could result in loss of rudder control. This is an improvement change which will minimize the possibility of a retention nut not being locked or backing off.

May 18/92

Bulletin 27-321

Revision 1 January 31/94

Page 19

DOUGLAS AIRCRAFT COMPANY

SERVICE BULLETIN

C. Description:

This Service Bulletin modifies the rudder power control valve and manifold assembly located in the aft fuselage at the lower end of the rudder hinge line as follows:

Option I

- (1) Replaces retention nut lockwire with a locking tab washer.
- (2) Machines a keyway in slide assembly to accept tab washer.
- (3) Bonds a self-locking element on the slide assembly per vendor special process and military specification MIL-F-18240E.
- (4) Modifies and reidentifies valve end cap, slide retainer, and slide nut.

Option II

- (1) Replaces slide assembly retention nut with a self-locking nut.
- (2) Modifies and reidentifies valve end cap, slide retainer, and slide nut.

D. Compliance:

It is recommended that this modification be accomplished at the earliest practical maintenance period.

E. Approval:

The resultant modification described in paragraph 1.C has been shown to comply with the applicable Federal Aviation Regulations and Revision 1, is approved by the Manager, Los Angeles Aircraft Certification Office, FAA Northwest Mountain Region, on January 21, 1994, and is approved as an alternate means of compliance with Airworthiness Directive No. 93-05-16 R1; Amendment 39-8698.

F. Manpower:

NOTE: Man-hours are estimated based on work to be performed by skilled personnel on aircraft/unit which has been placed in a maintenance status. The man-hour/elapsed time estimates do not include:

1. Preparation for the modification: Examples; defueling, purging, placing work stands, opening standard access doors, obtaining tools, and jacking when not essential to the modification.
2. Nonproductive elapsed time: Examples; sealant or adhesive cure time, cleaning, paint drying time, lunch and/or rest periods, and quality assurance inspections.

**DOUGLAS AIRCRAFT COMPANY
SERVICE BULLETIN**

3. Administrative functions: Examples; planning, engineering liaison, parts requisition, shift change coordination, and report writing.

Operators should take the above into consideration when scheduling this modification.

Man-hours do not include time for machine work required per Option I or II to accomplish this modification.

This modification may be accomplished in the following approximate man-hours or elapsed hours per aircraft:

<u>Work Phases</u>	<u>Man-Hours Per Options</u>	
	<u>I</u>	<u>II</u>
Gain Access	0.4	0.4
Remove	1.0	1.0
Modify (Bench)	3.0	2.0
Install	1.0	1.0
Functional Test	1.0	1.0
Close Up	<u>0.4</u>	<u>0.4</u>
Total Man-Hours	6.8	5.8
Total Elapsed Hours	6.8	5.8

G. Material - Cost and Availability:

(1) Aircraft:

- (a) Parts/materials required to accomplish this modification are listed in paragraph 3.A and are to be procured from operator's stock or supplier.
- (b) Slide assembly affected by Option I of this Service Bulletin is to be returned to the following address for installation of a self-locking element per Military Specification MIL-F-18240E.

Reference this Service Bulletin number and direct inquiries regarding cost and turnaround time to:

LONG-LOK Fasteners Corporation
Eastern Division
10630 Chester Road
Cincinnati, Ohio 45215
(DC-9 Service Bulletin 27-321)

(2) Spares:

Procurement of parts/materials required for modification of spares is the same as indicated in paragraph 1.G.(1).

May 18/92

Bulletin 27-321

Revision 1 January 31/94

Page 21

DOUGLAS AIRCRAFT COMPANY SERVICE BULLETIN

H. Tooling - Price and Availability:

None.

I. Weight and Balance:

None.

J. References:

- (1) This Service Bulletin may be accomplished in conjunction with DC-9 Service Bulletin 27-301 for convenience.
- (2) Federal Aviation Administration Airworthiness Directive No. 93-05-16 R1; Amendment 39-8698, effective November 18, 1993.
- (3) Data used in preparation of this Service Bulletin:

NOTE: Engineering drawings, noted with an asterisk, are not required by the operator to plan or accomplish this Service Bulletin. All required information from these drawings has been incorporated into this Service Bulletin.

<u>Data Identification</u>	<u>Change</u>	<u>Type of Data</u>
MIL-F-18240E MM Chapters 6, 27, and 29 OM Chapter 27		Military Specification Maintenance Manual
*SR09270026	C	Overhaul Manual Service Rework Drawing

- (4) Data previously supplied by original issue in support of Option I of this Service Bulletin:

<u>Data Identification</u>	<u>Change</u>	<u>Type of Data</u>
MIL-F-18240E		Military Specification

K. Publications Affected:

The modification outlined in this Service Bulletin affects the following DC-9 publications:

<u>Publication</u>	<u>Chapter/Section</u>
Illustrated Parts Catalog	27-20
Overhaul Manual	27-20

L. Electrical Load Data:

Not affected.

M. Software Accomplishment Summary:

Not affected.

DOUGLAS AIRCRAFT COMPANY SERVICE BULLETIN

2. Accomplishment Instructions:

WARNING: TO AVOID INJURY TO MAINTENANCE PERSONNEL OR DAMAGE TO EQUIPMENT, MAKE CERTAIN ADEQUATE PRECAUTIONS ARE TAKEN WHILE PERFORMING ANY WORK IF ELECTRICAL POWER IS APPLIED TO THE AIRCRAFT.

CAUTION: ELECTRICALLY GROUND THE AIRCRAFT.

NOTE: Chapters within parentheses refer to sections of the Maintenance Manual.

Option I

- A. Gain access to modification area by opening access door 6101A. (See chapter 6-11-6 for DC-9, chapter 6-25-00 for MD-80.)
- B. Depressurize hydraulic system. (See chapter 29-00-0, paragraph entitled "Depressurize/Pressurize Hydraulic System" for DC-9, chapter 29-00-00 for MD-80.)
- C. Remove and retain 5914066-(any configuration) rudder power control actuator assembly and attaching parts. (See chapter 27-20-8, paragraph entitled "Rudder Hydraulic Power Package - Removal/Installation" for DC-9, chapter 27-20-08 for MD-80.)
- D. Modify 5914190-(any configuration) rudder power control valve and manifold assembly per Figure 1.
Reidentify modified 5914190-5501 assembly as 5914190-5503.
Reidentification of any other configuration of valve and manifold assembly is at operator's option.
NOTE: Return slide assembly to supplier for installation of self-locking element per military specification MIL-F-18240E. See paragraph 1.G.(1)(a) for shipping and pricing information.
- E. Perform slide centering adjustment of rudder power control valve and manifold assembly per Overhaul Manual, chapter 27-20-7, page 11, step (22).
- F. Reidentify rudder power control actuator assembly as follows:

<u>New Part No.</u>	<u>Old Part No.</u>
5914066-5567	5914066-5555
5914066-5569	5914066-5557
5914066-5571	5914066-5559
5914066-5573	5914066-5561
5914066-5575	5914066-5563
5914066-5577	5914066-5565

Reidentification of any other configuration of rudder power control actuator assembly not shown is at operator's option.

- G. Install modified and reidentified rudder power control actuator assembly. (See chapter 27-20-8, paragraph entitled "Rudder Hydraulic Power Package - Removal/Installation" for DC-9, chapter 27-20-08 for MD-80.)

May 18/92

Bulletin 27-321

Revision 1 January 31/94

Page 23

DOUGLAS AIRCRAFT COMPANY SERVICE BULLETIN

- H. Pressurize hydraulic system and check for leakage. (See chapter 29-00-0, paragraph entitled "Depressurize/Pressurize Hydraulic System" for DC-9, chapter 29-00-00 for MD-80.)
- I. Functionally check rudder power control actuator. (See chapter 27-20-8, paragraph entitled "Adjustment/Test Rudder Hydraulic Power Package" for DC-9, chapter 27-20-08 for MD-80.)

J. Close access door.

Option II

- A. Gain access to modification area by opening access door 6101A. (See chapter 6-11-6 for DC-9, chapter 6-25-00 for MD-80.)
- B. Depressurize hydraulic system. (See chapter 29-00-0, paragraph entitled "Depressurize/Pressurize Hydraulic System" for DC-9, chapter 29-00-00 for MD-80.)
- C. Remove and retain 5914066--(any configuration) rudder power control actuator assembly and attaching parts. (See chapter 27-20-8, paragraph entitled "Rudder Hydraulic Power Package - Removal/Installation" for DC-9, chapter 27-20-08 for MD-80.)
- D. Modify 5914190--(any configuration) rudder power control valve and manifold assembly per Figure 2.
Reidentify modified 5914190-5501 assembly as SR09270026-5.
Reidentification of any other configuration of valve and manifold assembly is at operator's option.
- E. Perform slide centering adjustment of rudder power control valve and manifold assembly per Overhaul Manual, chapter 27-20-7, page 12A, step (22A).
- F. Reidentify rudder power control actuator assembly as follows:

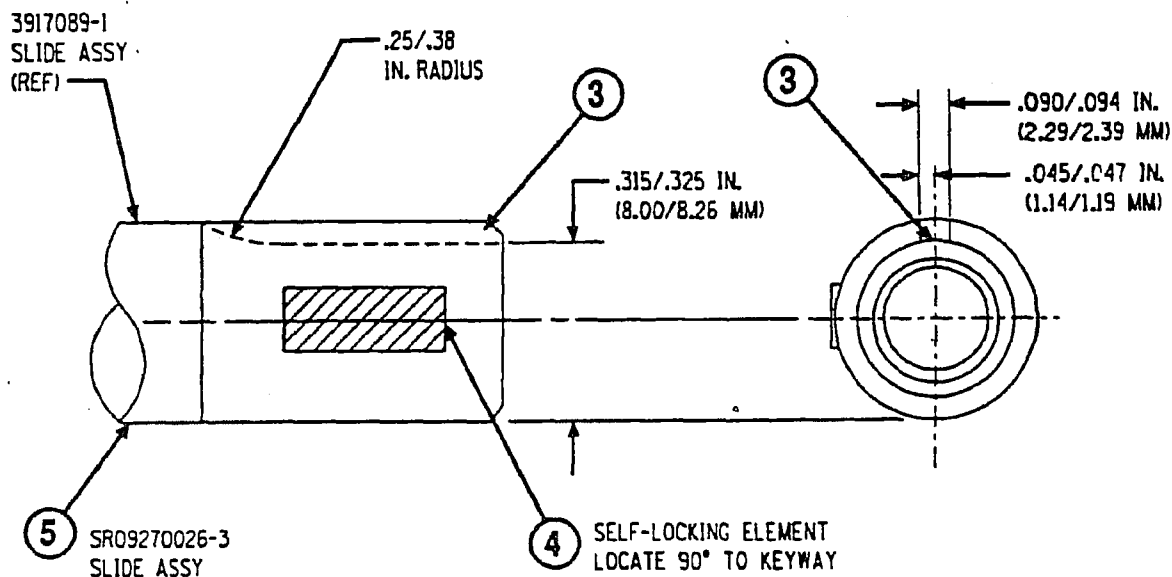
<u>New Part No.</u>	<u>Old Part No.</u>
5914066-5567	5914066-5555
5914066-5569	5914066-5557
5914066-5571	5914066-5559
5914066-5573	5914066-5561
5914066-5575	5914066-5563
5914066-5577	5914066-5565

Reidentification of any other configuration of rudder power control actuator assembly not shown is at operator's option.

- G. Install modified and reidentified rudder power control actuator assembly. (See chapter 27-20-8, paragraph entitled "Rudder Hydraulic Power Package - Removal/Installation" for DC-9, chapter 27-20-08 for MD-80.)
- H. Pressurize hydraulic system and check for leakage. (See chapter 29-00-0, paragraph entitled "Depressurize/Pressurize Hydraulic System" for DC-9, chapter 29-00-00 for MD-80.)
- I. Functionally check rudder power control actuator. (See chapter 27-20-8, paragraph entitled "Adjustment/Test Rudder Hydraulic Power Package" for DC-9, chapter 27-20-08 for MD-80.)
- J. Close access door.

DOUGLAS AIRCRAFT COMPANY SERVICE BULLETIN

TOLERANCES	
IN. = INCHES MM = MILLIMETERS	
ANGLES	$\pm 0^{\circ} 30'$
3 PLACE DECIMAL	$\pm .015$ IN. (0.38 MM)
2 PLACE DECIMAL	$\pm .03$ IN. (0.8 MM)
EXCEPT SPECIFIED TOLERANCES SHOWN	



OPTION I

NOTE: RUDDER POWER CONTROL VALVE AND MANIFOLD ASSEMBLY IS NOT SHOWN FOR CLARITY. DETAILS SHOWN ARE THOSE REMOVED DURING DISASSEMBLY THAT REQUIRE MODIFICATION.

- ① (NOT SHOWN) DISASSEMBLE RUDDER POWER CONTROL MANIFOLD AND VALVE ASSEMBLY TO REMOVE SLIDE ASSEMBLY PER OVERHAUL MANUAL, CHAPTER 27-20-7, PARAGRAPH ENTITLED "RUDDER POWER CONTROL VALVE AND MANIFOLD ASSEMBLY - DISASSEMBLY".

NOTE: SLIDE AND SLEEVE ASSEMBLY MUST BE RETAINED AS A MATCHED SET.

- ② (NOT SHOWN) DISCARD ONE 2917049-1 GUIDE.
- ③ MACHINE LOCKING TAB WASHER KEYWAY IN SLIDE ASSEMBLY.
- ④ (NOT SHOWN) RETURN SLIDE ASSEMBLY TO SUPPLIER FOR INSTALLATION OF SELF-LOCKING ELEMENT PER MILITARY SPECIFICATION MIL-F-18240E.
- ⑤ REIDENTIFY SLIDE ASSEMBLY AS SR09270026-3.

RUDDER POWER CONTROL VALVE AND MANIFOLD ASSEMBLY - MODIFICATION

May 18/92

FIGURE 1 (SHEET 1 OF 4)

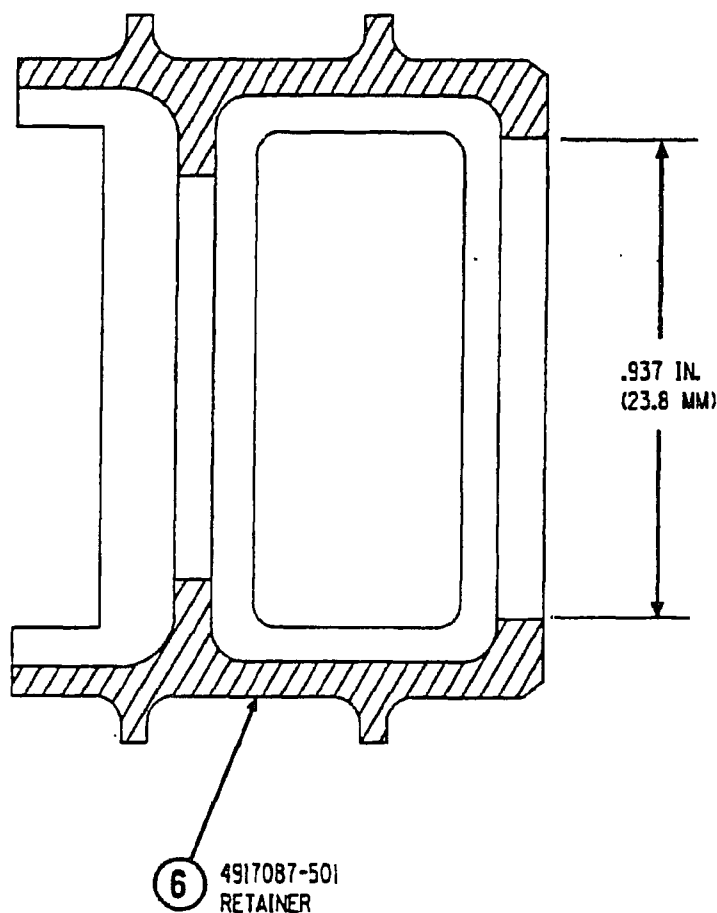
Bulletin 27-321

Revision 1 January 31/94

Page 25

McDonnell Douglas Corporation Proprietary Information. Use or disclosure of
THESE DATA SUBJECT TO RESTRICTIVE LEGEND ON TITLE PAGE OR FIRST PAGE.

DOUGLAS AIRCRAFT COMPANY
SERVICE BULLETIN



- ⑥ MACHINE 4917087-1 RETAINER OPENING TO DIMENSIONS SHOWN. REIDENTIFY RETAINER AS 4917087-501.

■ RUDDER POWER CONTROL VALVE AND MANIFOLD ASSEMBLY - MODIFICATION

Bulletin 27-321

FIGURE 1 (SHEET 2 OF 4)

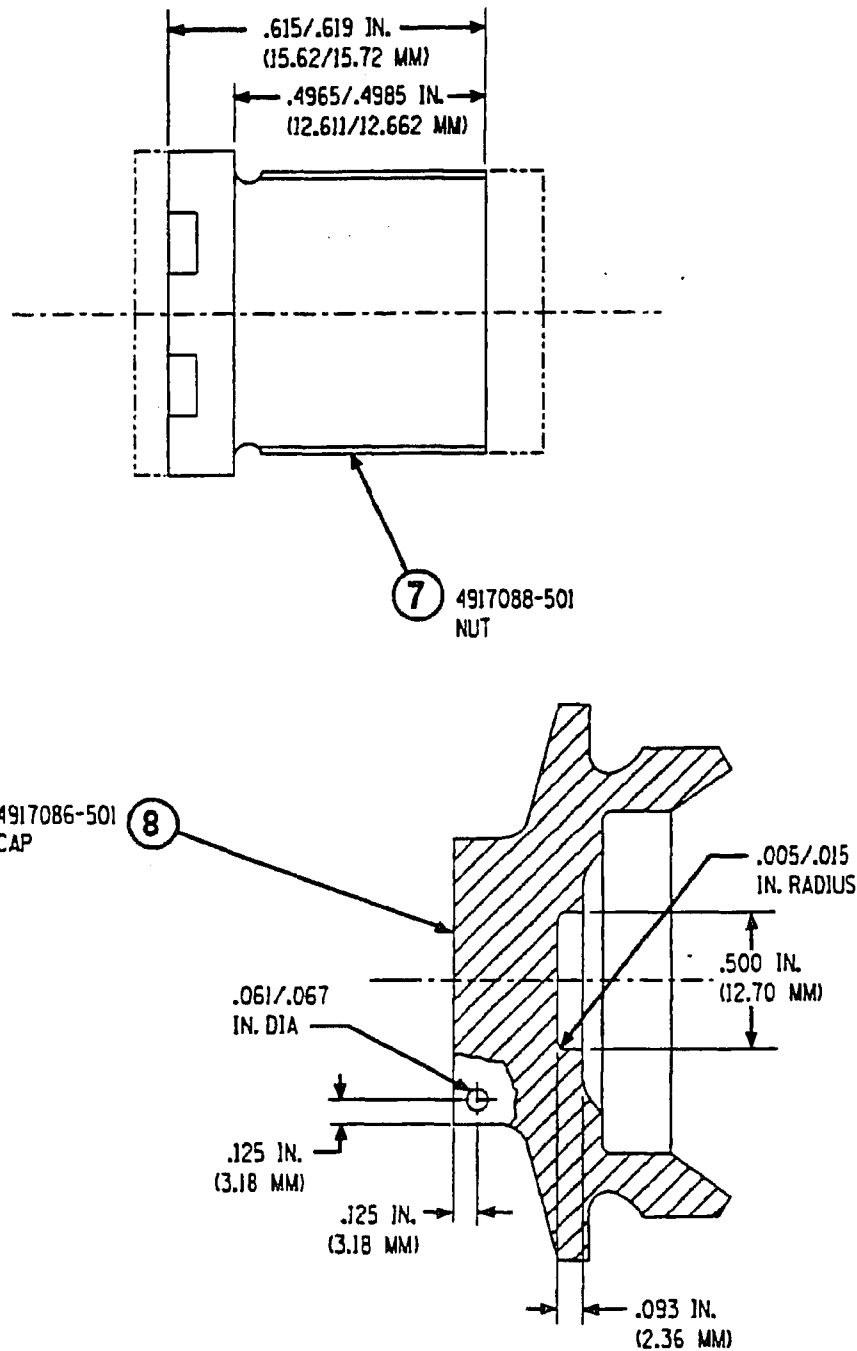
May 18/92

Page 26

Revision 1 January 31/94

McDonnell Douglas Corporation Proprietary Information. Use or disclosure of
THESE DATA SUBJECT TO RESTRICTIVE LEGEND ON TITLE PAGE OR FIRST PAGE.

DOUGLAS AIRCRAFT COMPANY SERVICE BULLETIN



- ⑦ MACHINE 4917088-1 NUT TO DIMENSIONS SHOWN. REIDENTIFY NUT AS 4917088-501.
- ⑧ MACHINE 4917086-1 CAP TO DIMENSIONS SHOWN. REIDENTIFY CAP AS 4917086-501.

RUDDER POWER CONTROL VALVE AND MANIFOLD ASSEMBLY - MODIFICATION

FIGURE 1 (SHEET 3 OF 4)

Bulletin 27-321

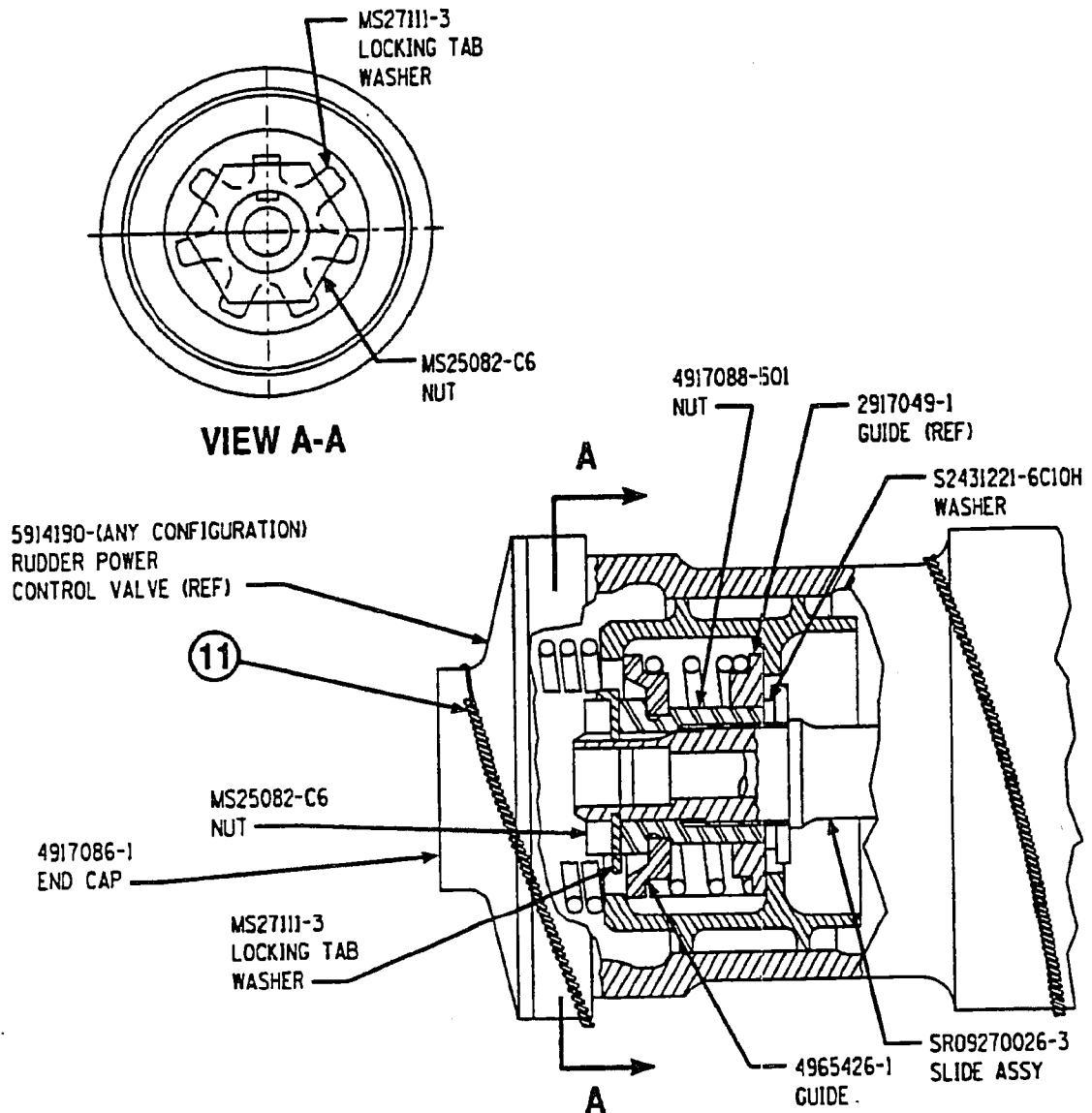
May 18/92

Revision 1 January 31/94

Page 27

McDonnell Douglas Corporation Proprietary Information. Use or disclosure of
THESE DATA SUBJECT TO RESTRICTIVE LEGEND ON TITLE PAGE OR FIRST PAGE.

DOUGLAS AIRCRAFT COMPANY SERVICE BULLETIN



- ⑨ (NOT SHOWN) REASSEMBLE AND ADJUST/TEST VALVE ASSEMBLY PER OVERHAUL MANUAL, CHAPTER 27-20-7.
- ⑩ INSTRUCTIONS DELETED BY REVISION 1.
- ⑪ INSTALL END CAP, TIGHTEN TO A TORQUE OF 25 TO 35 FOOT-POUNDS AND SAFETY CAP USING MS20995C32 LOCKWIRE.

RUDDER POWER CONTROL VALVE AND MANIFOLD ASSEMBLY - MODIFICATION

Bulletin 27-321

FIGURE 1 (SHEET 4 OF 4)

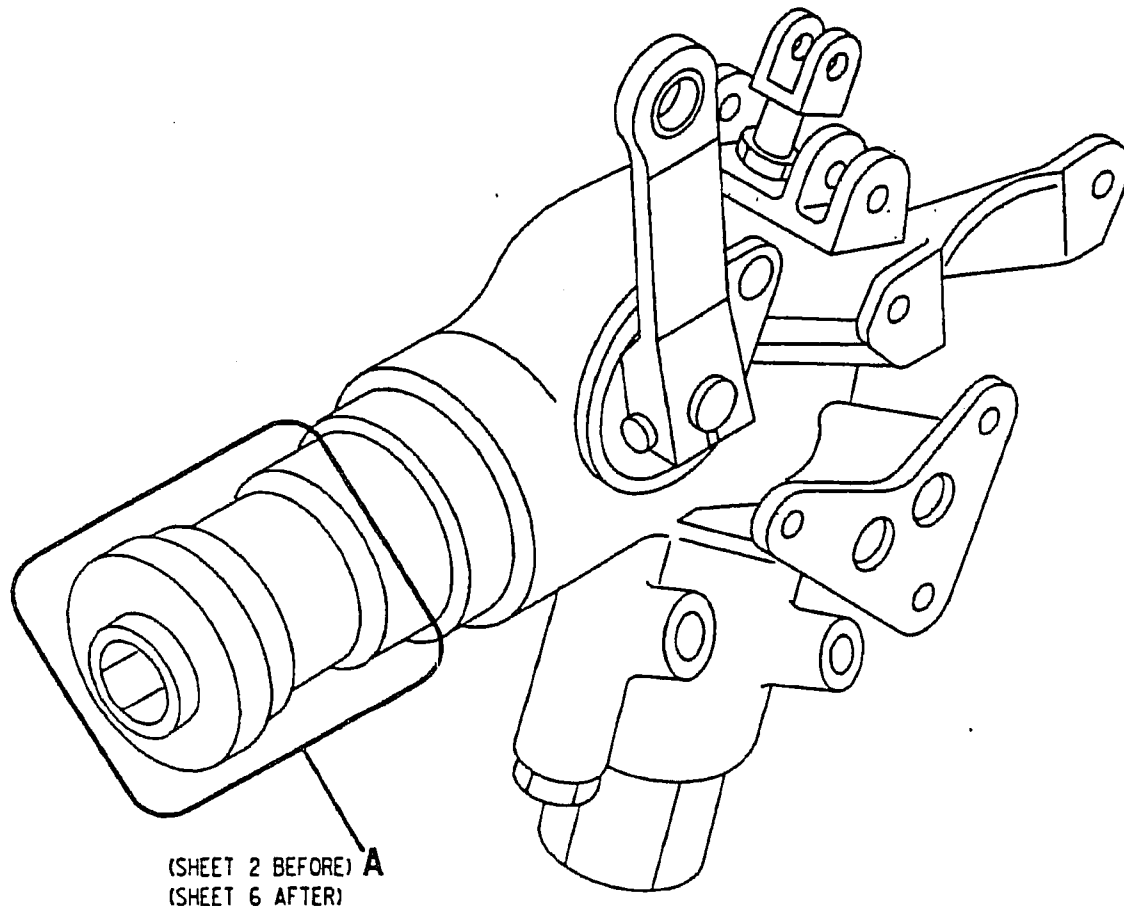
May 18/92

Page 28

Revision 1 January 31/94

McDonnell Douglas Corporation Proprietary Information. Use or disclosure of
THESE DATA SUBJECT TO RESTRICTIVE LEGEND ON TITLE PAGE OR FIRST PAGE.

DOUGLAS AIRCRAFT COMPANY
SERVICE BULLETIN



(SHEET 2 BEFORE) A
(SHEET 6 AFTER)

VALVE SHOWN REMOVED
FROM ACTUATOR ASSEMBLY
FOR CLARITY

TOLERANCES	
IN. = INCHES	MM = MILLIMETERS
ANGLES	$\pm 0^{\circ} 30'$
3 PLACE DECIMAL	$\pm .015$ IN. (0.38 MM)
2 PLACE DECIMAL	$\pm .03$ IN. (0.8 MM)
EXCEPT SPECIFIED TOLERANCES SHOWN	

RUDDER POWER CONTROL VALVE AND MANIFOLD ASSEMBLY - MODIFICATION

May 18/92

FIGURE 2 (SHEET 1 OF 6)

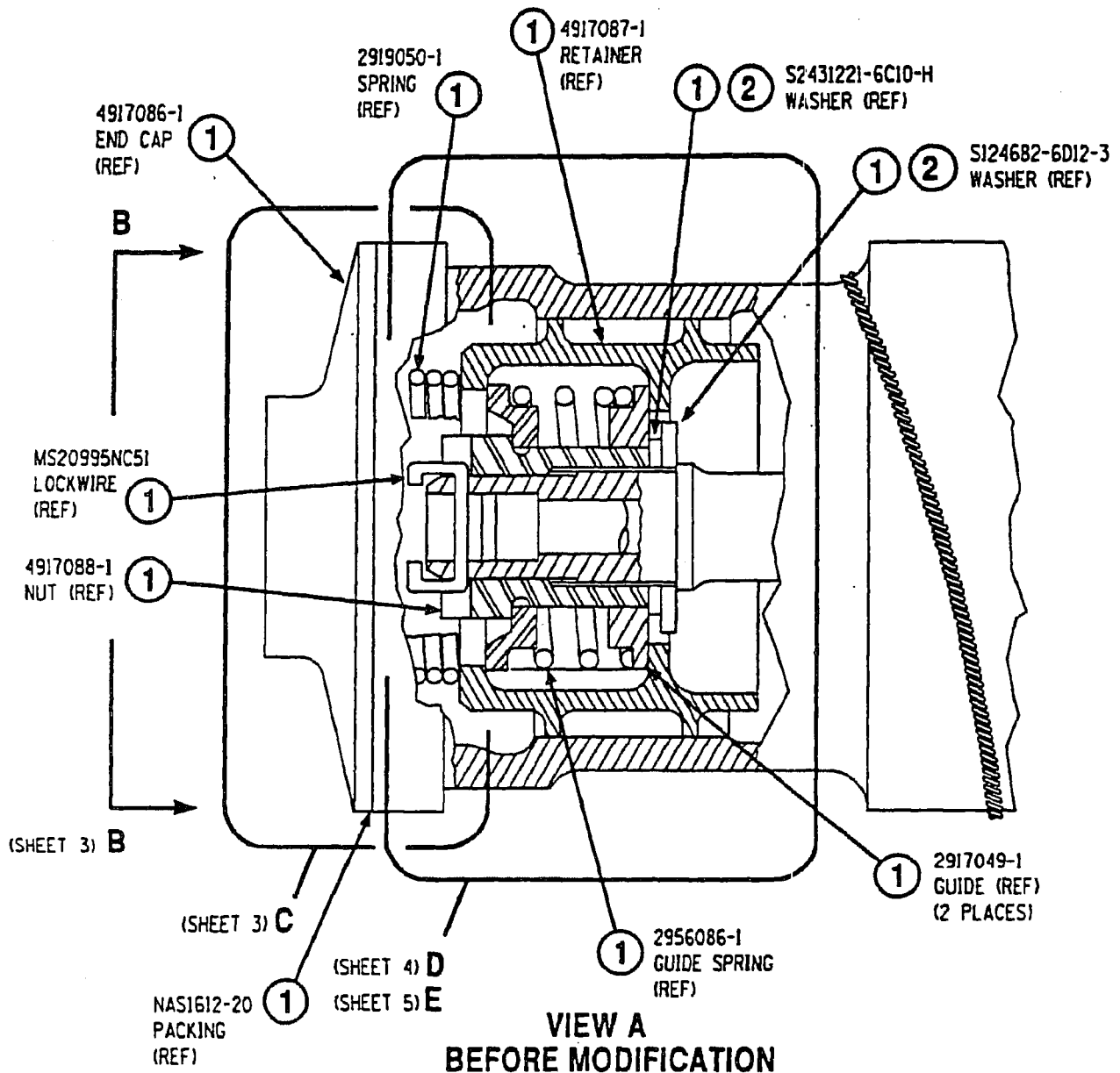
Bulletin 27-321

Revision 1 January 31/94

Page 29

McDonnell Douglas Corporation Proprietary Information. Use or disclosure of
THESE DATA SUBJECT TO RESTRICTIVE LEGEND ON TITLE PAGE OR FIRST PAGE.

DOUGLAS AIRCRAFT COMPANY SERVICE BULLETIN



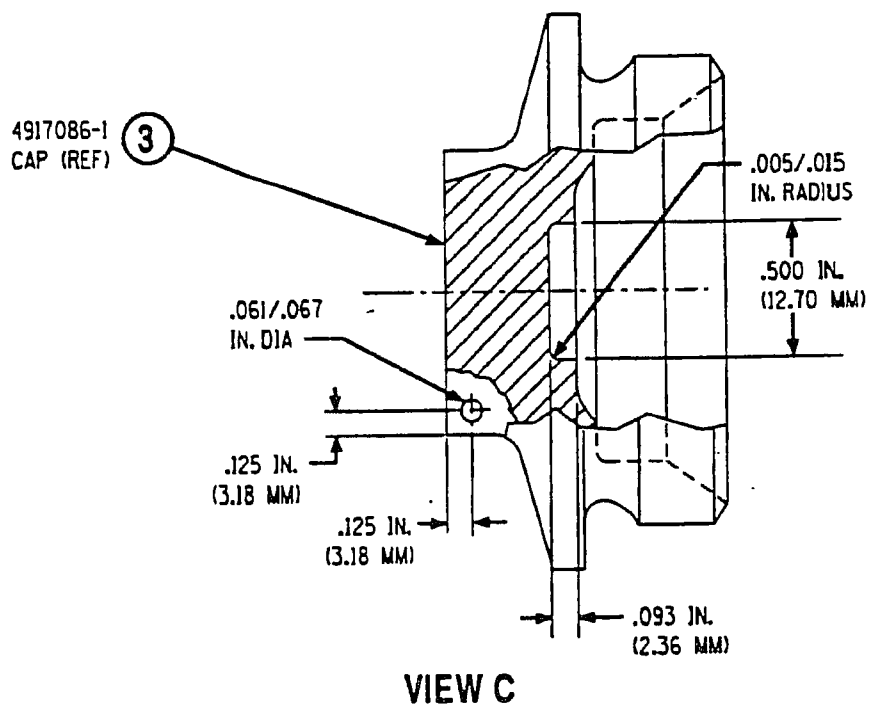
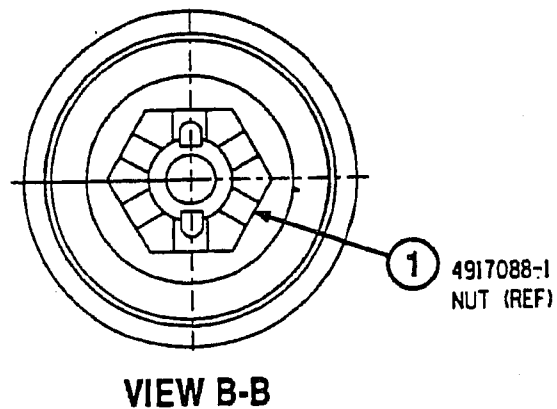
OPTION II

NOTE: USE OVERHAUL MANUAL, CHAPTER 27-20-7 FOR REFERENCE DURING DISASSEMBLY/ASSEMBLY OF VALVE.

- 1** REMOVE END CAP, PACKING, SPRING, LOCKWIRE, RETENTION NUT, RETAINER, TWO GUIDES AND SPRING, AND TWO WASHERS. RETAIN ALL PARTS EXCEPT PACKING, LOCKWIRE AND RETENTION NUT.
- 2** (NOT SHOWN) MEASURE AND RECORD STACK-UP THICKNESS OF RETAINED WASHERS. DISCARD WASHERS AFTER MEASUREMENT.

RUDDER POWER CONTROL VALVE AND MANIFOLD ASSEMBLY - MODIFICATION

DOUGLAS AIRCRAFT COMPANY SERVICE BULLETIN



- ③ MACHINE RETAINED END CAP TO DIMENSIONS SHOWN. REIDENTIFY END CAP AS 4917086-501.

RUDDER POWER CONTROL VALVE AND MANIFOLD ASSEMBLY - MODIFICATION

May 18/92

FIGURE 2 (SHEET 3 OF 6)

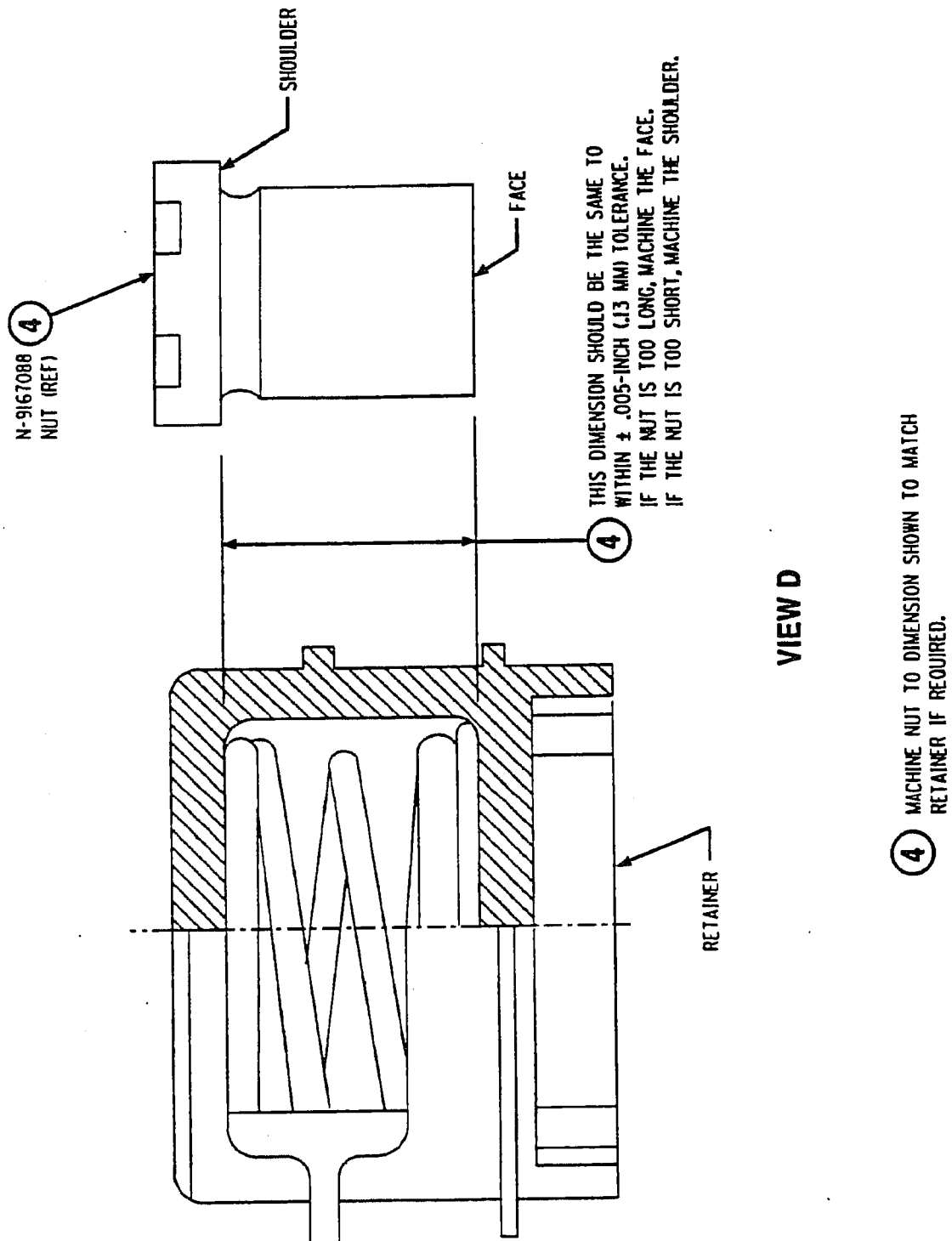
Bulletin 27-321

Revision 1 January 31/94

Page 31

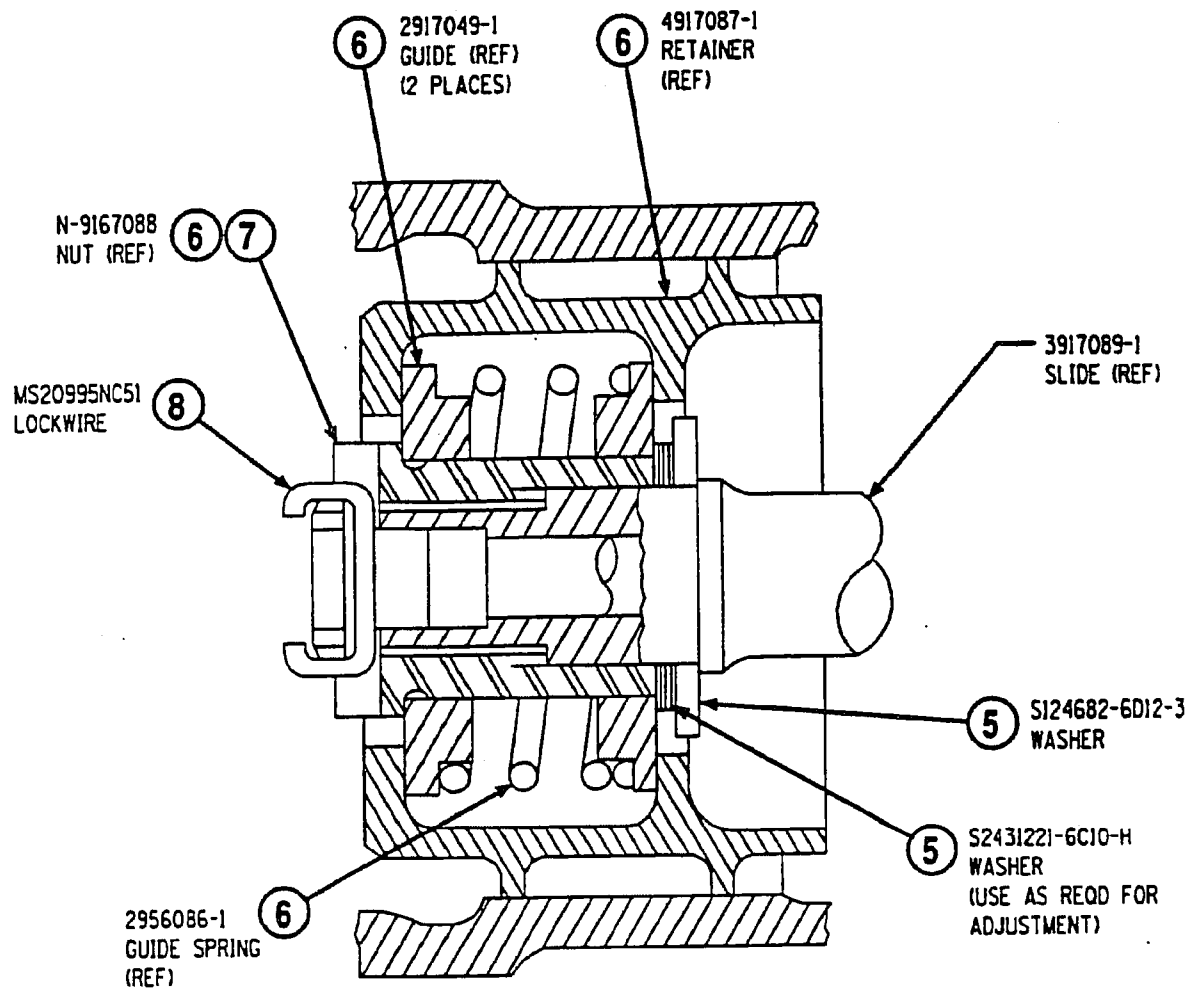
McDonnell Douglas Corporation Proprietary Information. Use or disclosure of
THESE DATA SUBJECT TO RESTRICTIVE LEGEND ON TITLE PAGE OR FIRST PAGE.

DOUGLAS AIRCRAFT COMPANY SERVICE BULLETIN



RUDDER POWER CONTROL VALVE AND MANIFOLD ASSEMBLY - MODIFICATION

DOUGLAS AIRCRAFT COMPANY SERVICE BULLETIN



VIEW E

- 5** INSTALL TWO NEW WASHERS. MAKE SURE STACK-UP THICKNESS OF WASHERS IS SAME AS PREVIOUSLY RECORDED THICKNESS OF DISCARDED WASHERS.
- 6** REINSTALL TWO GUIDES AND SPRING, RETAINER, AND NEW RETENTION NUT.
- 7** TIGHTEN RETENTION NUT TO A TORQUE OF 50 TO 75 INCH-POUNDS.

NOTE: ALIGNMENT OF SLOT IN NUT WITH HOLE IN SLIDE IS TO BE WITHIN THIS TORQUE VALUE.

- 8** INSTALL LOCKWIRE.

RUDDER POWER CONTROL VALVE AND MANIFOLD ASSEMBLY - MODIFICATION

May 18/92

FIGURE 2 (SHEET 5 OF 6)

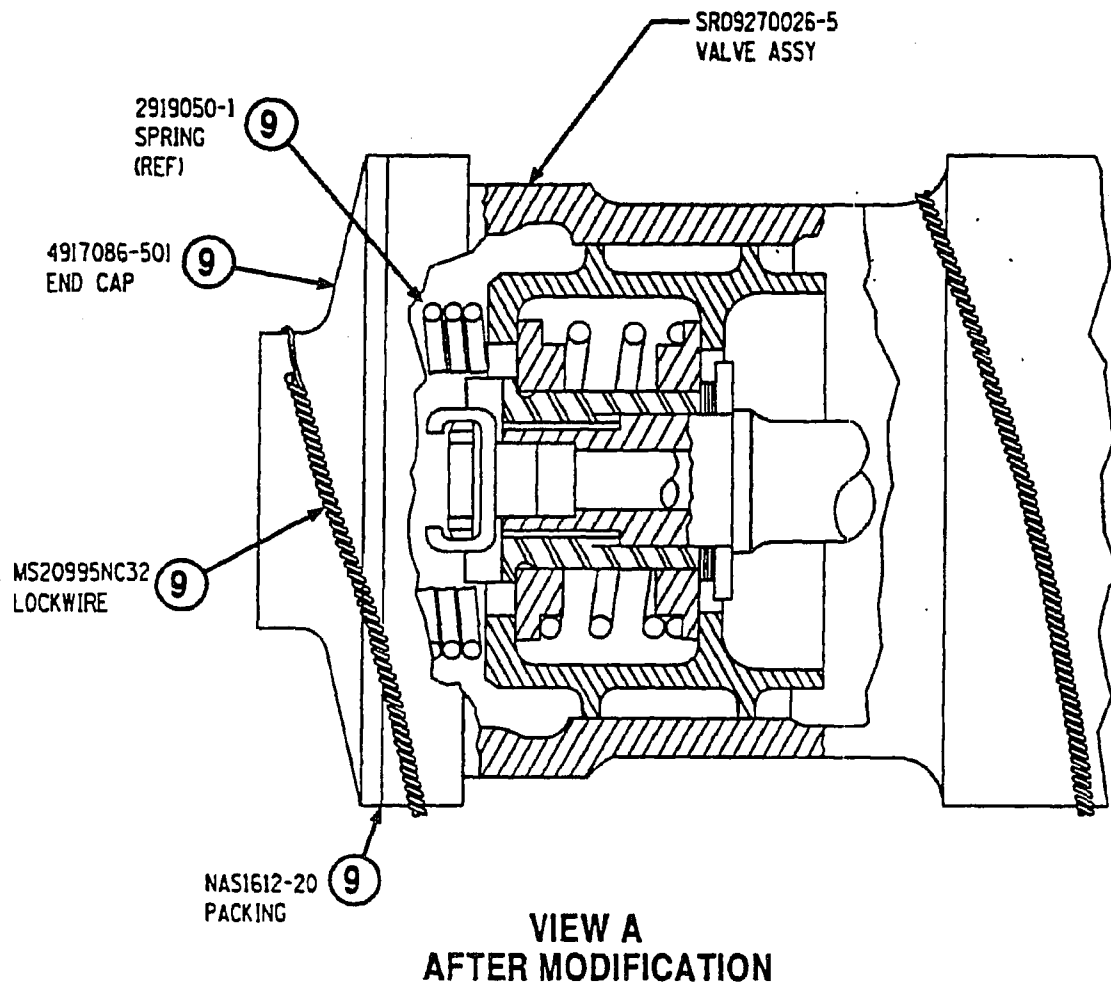
Bulletin 27-321

Revision 1 January 31/94

Page 33

McDonnell Douglas Corporation Proprietary Information. Use or disclosure of
THESE DATA SUBJECT TO RESTRICTIVE LEGEND ON TITLE PAGE OR FIRST PAGE.

**DOUGLAS AIRCRAFT COMPANY
SERVICE BULLETIN**



- ⑨ INSTALL RETAINED SPRING, NEW PACKING AND MODIFIED AND REIDENTIFIED END CAP. TIGHTEN CAP TO A TORQUE OF 25 TO 35 FOOT-POUNDS. SAFETY END CAP USING LOCKWIRE.

RUDDER POWER CONTROL VALVE AND MANIFOLD ASSEMBLY - MODIFICATION

■ Bulletin 27-321

FIGURE 2 (SHEET 6 OF 6)

May 18/92

Page 34

Revision 1 January 31/94

McDonnell Douglas Corporation Proprietary Information. Use or disclosure of
THESE DATA SUBJECT TO RESTRICTIVE LEGEND ON TITLE PAGE OR FIRST PAGE.

DOUGLAS AIRCRAFT COMPANY SERVICE BULLETIN

3. Material Information:

NOTE: Except as noted, old and new parts are interchangeable. However, the operator should consider that use of old parts will cancel the intent of this Service Bulletin.

A. The basis for the following material data is per aircraft.

- (1) Parts/materials to be procured from operator's stock or source indicated. See paragraph 1.G.(1). Discard old parts.

<u>New Part No.</u>	<u>Qty</u> <u>Per Option</u>		<u>Key Word</u>	<u>Old Part No.</u>	<u>Instructions- Disposition</u>
	<u>I</u>	<u>II</u>			
MS20995C32	2 Ft	2Ft	Lockwire	(.032-Inch Dia/Cres)	
MS20995NC51	2 In.	2 In.	Lockwire	(.051-Inch Dia/Monel)	
MS25082-C6	1		Nut		
MS27111-3	1		Locking Tab Washer		
NAS1612-20	1	1	Packing		1/
N-9167088	1	1	Nut	4917088-1	2/
S124682-6D12-3		1	Washer	S124682-6D12-6	1/
S2431221-6C10-H	1	1	Washer	S2431221-6C10-4	1/
4965426-1	1		Guide	2917049-1	1/

1/ May be procured from: Douglas Aircraft Company
P.O. Box 1771
Long Beach, California 90801
Attn: Part Sales - Commercial 78-22

CAGE
88277

2/ May be procured from: Fortner Engineering and
Manufacturing Incorporated.
918 Thompson Avenue
Glendale, California 91201-2012

52767

- (2) Parts to be modified and reidentified by operator:

<u>New Part No.</u>	<u>Qty</u> <u>Per Option</u>		<u>Key Word</u>	<u>Old Part No.</u>
	<u>I</u>	<u>II</u>		
SR09270026-5		1	Valve and Manifold Assembly	5914190-5501
4917086-501	1	1	Cap	4917086-1
4917087-501	1		Retainer	4917087-1
4917088-501	1		Nut	4917088-1

May 18/92

Bulletin 27-321

Revision 1 January 31/94

Page 35

DOUGLAS AIRCRAFT COMPANY SERVICE BULLETIN

<u>New Part No.</u>	<u>Qty Per Option</u>		<u>Key Word</u>	<u>Old Part No.</u>
	<u>I</u>	<u>II</u>		
5914066-5567	1	1	Actuator Assembly	5914066-5555
or				
5914066-5569				5914066-5557
or				
5914066-5571				5914066-5559
or				
5914066-5573				5914066-5561
or			Valve and Manifold Assembly	
5914066-5575				5914066-5563
or				
5914066-5577				5914066-5565
5914190-5503	1			5914190-5501

- (3) Part to be modified by noted supplier and reidentified by the operator per Option I. See paragraph 1.G.(1)(b) for procurement instructions.

<u>New Part No.</u>	<u>Qty Per Option I</u>	<u>Key Word</u>	<u>Old Part No.</u>	<u>Instructions- Disposition</u>
SR09270026-3	1	Slide Assembly	3917089-1	3/

3/ Address and return for modification to:

LONG-LOK Fasteners Corporation
Eastern Division
10630 Chester Road
Cincinnati, Ohio 45215.
(DC-9 Service Bulletin 27-321)

B. The basis for the following material data is per spares.

Modify and reidentify spare 5914190-any configuration rudder power control valve and manifold assembly and 5914066-any configuration rudder power actuator assembly per this Service Bulletin. Parts requirements are identical to those listed in paragraph 3.A.(1).

Any inquiries regarding accuracy, timeliness, completeness, and legibility of this Alert Service Bulletin should be directed to the local DAC Field Representative, or:

Douglas Aircraft Company
P.O. Box 1771
Long Beach, California 90801
Attn: Business Unit Manager
Service Bulletins
Service Changes and Modification Kits
Product Support 76-40
(MD-80 Service Bulletin 27-321)

GSA/JW
PDG

Bulletin 27-321

May 18/92

Page 36

Revision 1 January 31/94